



Rockville Reports

APRIL 2012 • VOL. 58 #4

• A MONTHLY NEWSLETTER FOR THE RESIDENTS OF THE CITY OF ROCKVILLE •

New Fitness Center Helps Rockville Seniors Add Life to Their Years

The Rockville Senior Center will soon have a brand new fitness center, including a new entrance, locker rooms and an expanded fitness room. Work at the center includes a 6,000-square-foot addition and a 4,000-square-foot renovation that is expected to be complete this summer.

The center will include new workout equipment designed to accommodate all fitness levels and members who are on the path to recovery from an injury or surgery. Selected pieces of equipment can also accommodate those seniors who are wheelchair-bound.

"Seniors are an important part of our population," said Chris Klopfer, senior sports and

fitness supervisor. "We want to keep them healthy and strong; we want to keep them able to live independently, so they can age in place."

The Rockville Senior Center is the former home of Woodley Gardens Elementary School. Originally constructed in 1964, the City first opened the doors to the Rockville Senior Center in 1982.

"It looks phenomenal," said Marty Gross, senior center member. "It has about four times the space we had before. Now there's plenty of open room, we have equipment that is designed for us, and it should be great, looking forward to it."

The new addition will help maintain and improve the facil-

Save Money When You Purchase a Membership Now!

- Rates will go up Sunday, July 1.
- Fitness memberships will increase from \$50 to \$75.
- First time members can save 50 percent off the membership and fitness fees.



The new equipment, above, is part of the fitness center expansion at Rockville Senior Center. Rockville residents, ages 60 and above, are eligible for resident rates at a significant savings.

ity, which is critical to providing the best service to Rockville seniors.

The \$1.9 million project to expand the Senior Center began in December 2010. Rockville Seniors, Inc. contributed \$96,000 toward the project and donates \$20,000 per year toward the cen-

ter's operating expenses.

To learn more about the plans for the grand re-opening of the Senior Center or how to get involved with Rockville's seniors go to www.rockvillemd.gov/seniorcenter.

— Contributed by Jennifer Ligsay

Get Rockin' at the School of Rock(ville) Program for High School Students Now Accepting Applications

Rockville students interested in learning more about the City's government, history and neighborhoods are invited to register for the free citizen-awareness program, School of Rock(ville).

The next session of School of Rock(ville) begins this month. Classes will be held Wednesday, April 25, to Friday, April 27, 3:30 to 6 p.m. and Monday, April 30, 5 to 7:30 p.m. Applications are due Friday, April 20.

In this program, students will learn:

- ways to get involved in government and community;
- the history and demographics of Rockville;
- how the City connects with residents;
- what it takes to plan a city; and
- the Council/Manager form of government.

Class size is limited to 15 students in grades 9 through 12 who attend school in the city of Rockville. Participants must be able to attend the entire four-day program in order to get a certification of completion. Students must have permission of parents and school to attend.

For more information about the School of Rock(ville), or to apply, visit the website at www.rockvillemd.gov/neighborhoods or contact Rocio Snowdy, neighborhood resources coordinator, at rsnowdy@rockvillemd.gov or 240-314-8345.

— Contributed by Rocio Snowdy

Police Building Roof Goes Green

The roof of the new Rockville Police Headquarters annex building is implementing a green technology, new to the City's facilities—a green roof.

The roof is an innovative method to treat stormwater. Instead of the water draining into the stormwater system, it is reused to help plants grow on the roof.

"It's an engineered layered system so it not only takes in the water to support the plants, it holds that water and then releases it through evaporation," said Jerry Daus, parks and facilities development manager.

The types of plants planned for the roof include: hardy yellow plants, sedum foliage and other plants that are tough, evergreen and easy

to grow.

There are two buildings on the police headquarters property. The historic Post Office didn't lend itself to a green roof, but with the construction of the new annex building, architects and engineers could employ the new technology.

The total cost of the new Police Headquarters, first envisioned in 2005, is \$6.4 million dollars. It will accommodate the department's current workforce and allow for 10 percent future growth. Key portions of the Post Office historic exterior and lobby will be preserved and enhanced.

This green amenity to the new police headquarters (set to open summer 2012) is just one example of how the City of Rockville is devoted to improving the environment.



The green roof on top of the Police Headquarters annex will include hardy evergreens like this plant.

To learn more about green practices in the City go to www.rockvillemd.gov/environment. To learn more about the new Rockville Police Headquarters go online to www.rockvillemd.gov/police.

Learn more about the green roof on Rockville Channel 11 during the month of April or on the City's YouTube channel (www.youtube.com/cityofrockville) at www.youtube.com/cityofrockville.

— Contributed by Jennifer Ligsay

Mayor and Council Receive FY13 Proposed Budget

On March 26, the Mayor and Council were formally presented with the Fiscal Year 2013 proposed budget. The Mayor and Council will continue deliberating the

TO LEARN MORE

Visit the "It's Your Money" page at www.rockvillemd.gov/budget, contact the City's budget office at 240-314-8408 or budgetinquiry@rockvillemd.gov.

FY13 budget and gathering public input, a process which began in January. The body will discuss the budget at their regular meetings on April 9, 16 and 30, and two public hearings have been scheduled for April 2, and May 7.

The budget is scheduled to be adopted on May 21.

For more information on the proposed budget, go to page 2...

Get Into It...

PAGE 2 **Get Involved in the FY13 Budget Process**
Take a look at the proposed budget.

PAGE 3 **Make Rockville Sustainable**
The results from the City's sustainability survey are in. Learn more.

PAGE 4 **What's New in Your Neighborhood?**
See a map of development happening around town and near you.

PAGE 6 **Celebrate Spring**
There are plenty of great events happening right here in Rockville.

MAYOR & COUNCIL
111 Maryland Ave.
Rockville, Maryland
20850-2364

PRESORTED
STANDARD
U.S. POSTAGE
PAID
ROCKVILLE, MD.
PERMIT NO. 63

ECR WSS
LOCAL
POSTAL CUSTOMER

FY13 Budget Focus

Public Input

The public is asked to let the Mayor and Council know their thoughts on the budget.

Share your input:

- In person at a public hearing on May 7
- In writing at 111 Maryland Avenue, Rockville, MD 20850
- Via email at mayorcouncil@rockvillemd.gov.

Budget Dates at a Glance

- Mayor and Council will discuss the budget at their regular 7 p.m. meetings: April 9, 16 and 30
- Public Hearings April 2nd and May 7
- Public record for all testimony closes May 17
- Budget adoption by Mayor and Council May 21
- Fiscal Year 2013 starts July 1

Questions About the Budget?

- Visit www.rockvillemd.gov/budget
- Contact the City's budget office at 240-314-8408 or budgetinquiry@rockvillemd.gov

Budget Snapshot

Reviewing the charts below gives the reader additional information in a visual format for better comprehension about the City's FY13 budget.

- **Assessed Value of Real Property** - Property values are falling this year due to re-assessments.
- **Making 'Cents' of the City Dollar** - A breakdown of how the City spends each dollar.
- **Proposed FY13 General Fund Revenues** - Property taxes make up the majority of the City's revenue.
- **Rockville Utility Rates** - Sewer, water and Stormwater rates will increase while the refuse rate will decrease.

IT'S YOUR MONEY:

To find out all the details about the Fiscal Year 2013 budget and the steps leading to its adoption, go to www.rockvillemd.gov/budget

The Mayor and Council are calling on the public to be involved in the budget process.

"We need to hear directly from residents about the issues and priorities that matter most to them," said Mayor Phyllis Marcuccio.

There are many ways the public can comment on the budget (see left).

The FY13 operating budget maintains Rockville's current level of programming and services, and continues efforts to carefully manage spending (see charts below). Despite a modest increase in some revenues, the City's property tax revenue will decrease by \$1.8 million from the FY12 adopted budget. The City's tradition of budgeting conservatively and preparing for the impacts of the recession has allowed for a balanced FY13 budget without increases to the tax rate or reductions in services.

Operating Budget

The total proposed operating budget of \$107 million is a decrease of 0.2 percent from last year's budget. The General Fund budget – the fund that supports the largest portion of the operating budget - is \$65 million, a decrease of 1.6 percent.

The proposed budget includes a reduction of 9.8 regular positions from the RedGate Golf Course, and a one percent salary increase for employees. Healthcare benefits and pension contributions will be maintained and overtime will be reduced by 10 percent citywide.

The City's current real property tax rate of \$0.292 per \$100 of assessed valuation is maintained for FY13.

Capital Improvement Plan

The FY13 Capital Improvement Plan (CIP), the City's five-year plan for funding capital expenses, is focused on maintaining current infrastructure, and does not include funding for any new projects.

The strain that the reduced property tax revenue places on the operating budget means fewer funds are available to transfer to the City's capital budget. If revenues continue to fall, it will affect Rockville's ability to keep up with infrastructure maintenance in future years. For instance, in FY13 the City's asphalt paving is not funded at the level it has been in the past, and several other projects

will receive no funding.

The FY13 CIP is the first in over a decade that does not include new tax payer supported debt.

Enterprise Funds

Rockville operates six enterprise funds, which function similarly to a private business, with costs fully recovered through user charges. Rockville's six designated enterprise funds are:

- **Water Fund**, accounts for finances associated with treatment and distribution of potable water;
- **Sewer Fund**, accounts for the collection and treatment of sewage;
- **Refuse Fund**, accounts for the collection and disposal of recycling, refuse and yard waste;
- **Stormwater Management Fund**, accounts for maintaining existing and new stormwater management facilities, and storm drainage and water quality programs;
- **Parking Fund**, accounts for revenue and expenses associated with parking, including tickets, meters and garage leases; and
- **RedGate Golf Course**, accounts for outstanding personnel costs, debt and depreciation associated

with the City's Golf course, which has been leased to Bill Casper Golf.

For FY13, rate increases are projected for the stormwater management fee and the water and sewer rates, while refuse rates are expected to decrease. Overall, most residents will see an average rate increase of \$4.26 per month (see chart below).

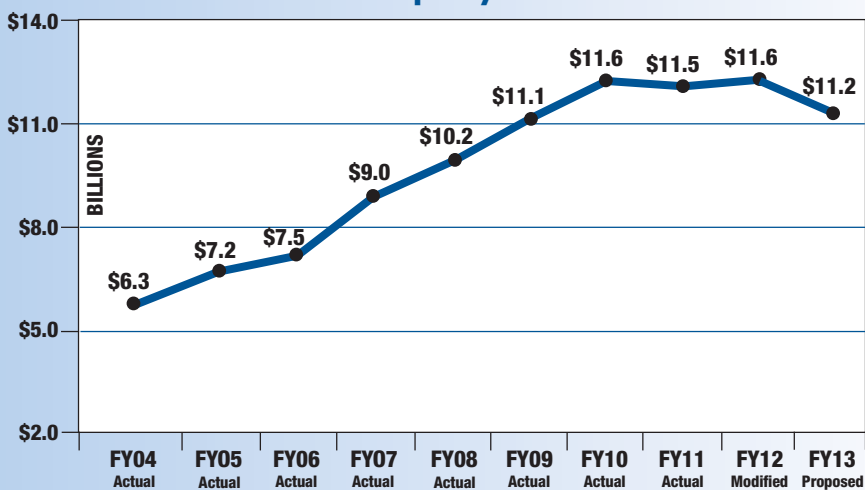
Looking Ahead

The reduction in property tax revenue expected in FY13 and FY14 is associated with a reduction in real property taxable assessed values (see chart below). Assessed values increased between 2004 and 2012, while current and future drops in assessed values reflect the impact of the recession.

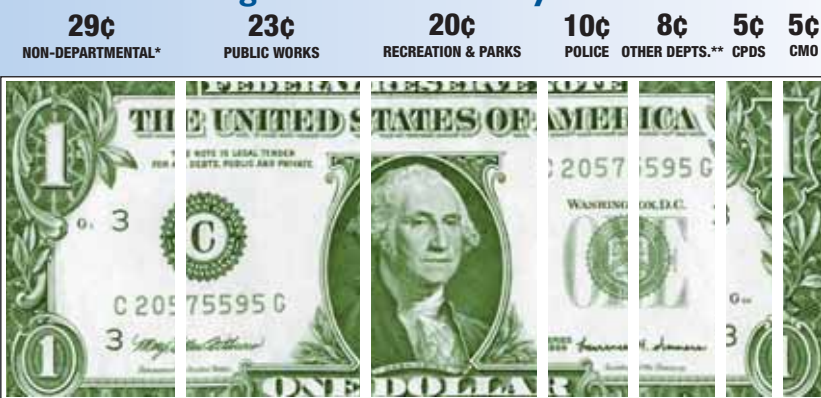
Property tax represents the majority of the total revenue collected by the City, and a drop in property assessments affects the City's budget. Maintaining a balanced budget in the future will require the City to consider the following options.

- Reducing City-offered programs and services
- Growing the City's tax base
- Growing the City's tax rate
- Borrowing to fund capital needs +

Assessed Value of Real Property



Making 'Cents' of The City's Dollar

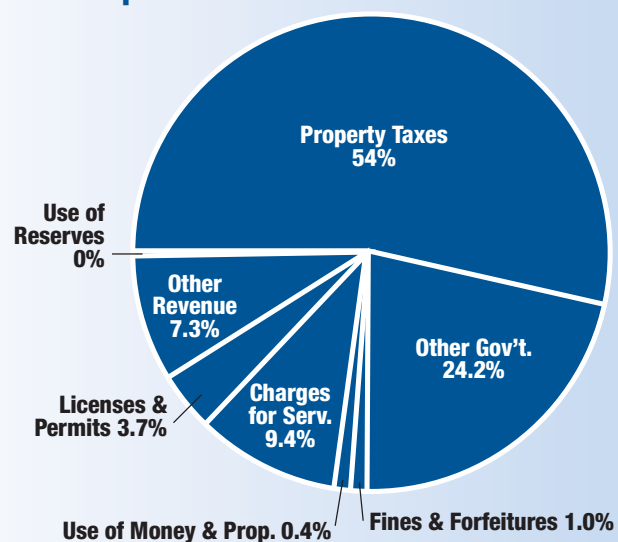


FY 2013 Making 'cents' of the City's Dollar: Illustrates how, by department, approximately \$1 of the City's Total Budget is allocated. City Manager's Office (CMO) comprises the Executive Office, which includes legislative affairs and REDI; Communication and Public Information; and Neighborhood Resources.

* Includes debt service.

** Other departments include: Mayor and Council, City Attorney, Finance, Human Resources and Information Technology.

Proposed FY13 General Fund Revenues



Rockville Utility Rates

	ADOPTED	PROPOSED
Refuse Rate	FY 2012	FY 2013
5% decrease	\$392.40 per year	\$372 per year
Sewer Rate*	FY 2012	FY 2013
9% increase	\$5.26 per 1,000 gallons	\$5.73 per 1,000 gallons
Stormwater Management Rate	FY 2012	FY 2013
26% increase	\$62.48 per ERU** per year	\$78.90 per ERU per year
Water Rate*	FY 2012	FY 2013
8% increase	First 12,000 gallons per quarter: \$4.33 Next 12,000 gallons per quarter: \$6.23 Over 24,000 gallons per quarter: \$6.69	First 12,000 gallons per quarter: \$4.68 Next 12,000 gallons per quarter: \$6.73 Over 24,000 gallons per quarter: \$7.23

* A ready-to-serve charge per quarter for water and sewer service is based on the size of the meter. For households with a 3/4 inch meter, the proposed charge equals \$12.17 per quarter, an increase of 20 percent from FY 2012.

** An ERU is an Equivalent Residential Unit, which is the average impervious surface on a typical single-family lot in Rockville.

Mayor & Council

City of Rockville Elected Officials (Two-Year Term from November 2011 to November 2013)



Mayor
Phyllis Marcuccio



Councilmember
John F. Hall, Jr.



Councilmember
Tom Moore



Councilmember
Bridget Donnell Newton



Councilmember
Mark Pierzchala

Success of Economic Summit Leads to Plans for Second Summit Community Groups Forming Now

The Rockville Summit: Roadmap for the Future, held in October, included more than 200 members of the residential, business, government and non profit communities who engaged in a dialogue about the City, the regional economy and Rockville's future.

The five themes to emerge from the first summit were: job growth and residential work force, housing, preservation of Rockville's character, education and school capacity and transportation and traffic.

The Mayor and Council will hold a second summit in fall, 2012. As part of the planning process for the second summit, the City will convene community work groups based on the

themes that emerged from the first summit. Each work group will examine a theme and present the results at the fall 2012 Summit.

The results of the work groups and the second summit will contribute to the development of a vision for Rockville that will be used when revising the Comprehensive Master Plan. The Comprehensive Master Plan guides where and in what form development occurs in the community and sets the framework for the City's capital improvement projects.

Now is your opportunity to be a part of Rockville's future. To participate in a work group, please go to www.rockvillemd.gov/summit ❖

Community Makes Progress toward Sustainable Maryland Certification Sustainable Survey Results Are In

More than 230 people who live and work in the city completed the online Rockville Sustainability Survey to contribute to a greener, healthier and more livable community.

The survey was developed by the City as one step toward becoming a Sustainable Maryland Certified municipal-

ity, a new program created by the University of Maryland and Maryland Municipal League.

To learn more about Rockville's sustainability programs, email Erica Shingara at eshingara@rockvillemd.gov or visit www.rockvillemd.gov/environment/sustainability. ❖

Rockville's Top 10 Sustainable Priorities

1. Ensure clean and reliable drinking water (85%).
2. Increase waste reduction, reuse and recycling (70%).
3. Increase green building practices used in new construction and retrofits (68%).
4. Provide high quality parks, facilities and recreation programs (64%).
5. Improve stormwater management and community watershed stewardship (61%).
6. Reduce energy consumed by homes, businesses and Rockville government (61%).
7. Promote compact, walkable and mixed use neighborhoods (59%).
8. Increase use of renewable energy by homes, businesses and Rockville government (57%).
9. Promote alternative transportation options (57%).
10. Provide access to healthy, locally grown food (51%).

Note: Percentages reflect the number of respondents identifying a topic as "highly important."

Rockville to Continue Efforts to Engage Public in Planning Initiatives

At their meeting March 5, the Mayor and Council agreed with recommendations from the Citizens Implementation Committee (CIC) and instructed City staff to continue efforts to engage residents in key planning initiatives.

The Community Planning and Development Services Department and Neighborhood Resources Division have already begun implementing some of the recommendations and will continue to explore how best to implement others.

Highlights of the committee's recommendations include:

- Increasing the printed materials available about planning initiatives in the community, including multilingual citizen engagement brochures and brochures specific to renters and businesses;
- Improving the organization and accessibility of planning projects (such as neighborhood plans) so

residents can have greater input, including using consultants for larger planning projects due to the complexities involved;

- Displaying proposed development projects by address and neighborhood so residents can more easily identify their location (or view them on a map); and
- Implementing an Alternative Dispute Resolution (ADR) process during the post-application meeting by providing a neutral facilitator to support productive dialogue about community concerns during the development review process.

For further Rockville planning information, visit the City's website at www.rockvillemd.gov and click on City/Neighborhood Plans for planning projects or on Development Projects under About Rockville for current development applications. ❖

SEE PAGE 4 FOR MORE PLANNING NEWS.

Board and Commission Vacancies

The City is seeking applicants for:

- Compensation Comm. (1)
- Human Rights Commission (1)
- Landlord Tenant Affairs Commission (1)
- Rockville Scholarship

Foundation (2)

- Senior Citizens Commission (2)
- Sign Review Board (1)

According to City policy, members whose terms are ending are invited to reapply for appointment. ❖



MAYOR AND COUNCIL RECOGNIZE ROCKVILLE'S BUSINESSES... Each year the City of Rockville and Rockville Economic Development, Inc. (REDI) celebrate business appreciation week. Councilmember Mark Pierzchala stopped by Classic Homes.

MEETINGS & DROP IN SCHEDULE

All General Sessions, Work Sessions and Public Hearings are televised on Rockville Channel 11, and are available on streaming video at www.rockvillemd.gov. Residents may comment on any subject for up to three minutes during "Citizens Forum" at most meetings. All meetings are at 7 p.m. and are subject to change.

- April 9 (Monday)
- April 16 (Monday)
- April 30 (Monday)
- May 7 (Monday)
- May 14 (Monday)

The Mayor and one Councilmember are available to meet with residents for drop-in discussions from 5:30-6:30 p.m. one Monday per month in the Mayor and Council office at City Hall. No appointment is necessary, but a call to the City Clerk's Office is appreciated, call 240-314-8280.

In addition to Mayor Marcuccio, the upcoming councilmembers scheduled are: Bridget Donnell Newton, April 9., Mark Pierzchala, May 14.

IN BRIEF

Mayor and Council to Honor Environmentalists, Photographers

At their meeting Monday, April 30, the Mayor and Council will honor this year's Environmental Excellence Awards and Environmental Photo Contest winners.

The Rockville Environmental Excellence Awards, including the Carl Henn Outstanding Individual Environmental Achievement Award, are presented to individuals or organizations to recognize outstanding achievement or service to the environment in Rockville.

The City's annual Environmental Photo Contest recognizes local photographers who capture images that reflect Rockville's environment. Winning photos will be exhibited at VisArts in Rockville Town Center, 155 Gibbs Street, Friday, June 8, to Friday, June 22; posted to the City's website at www.rockvillemd.gov; and shared on the City's facebook page at www.facebook.com/cityofrockville.

For more information visit www.rockvillemd.gov/environment.

Baseball Season Opens in Rockville Mayor to Throw Ceremonial Opening Pitch

Rockville Mayor Phyllis Marcuccio will officially open the 2012 baseball season in Rockville during the annual Rockville Baseball Association (RBBA) Opening Day ceremony, Saturday, April 14, at 9 a.m. The ceremony and the season's opening games will take place at Dogwood Park, 800 Monroe Street.

The City of Rockville Police Department Color Guard will participate in the ceremony. Singer Linda Colbert will perform the national anthem.

The public is invited to attend the free festivities. For more information contact Jen Betts, sports programs specialist, at 240-314-8653 or jbetts@rockvillemd.gov.

Rockville Citizen Needed to Represent Community with Montgomery County

The Western Montgomery County Citizens Advisory Board is seeking a volunteer to serve on the board to represent Rockville.

The board meets monthly and offers advice on local issues and needs to the county executive and the county council.

The board is comprised of 19 representatives - 12 neighborhood representatives, six business community representatives and one nonprofit representative. The board has committees on land use, transportation, budget, public safety and quality of life.

Members are nominated by the county executive and confirmed by the county council.

Members serve three-year terms. Board meetings are held the second Monday each month at 7 p.m. Members are expected to contribute approximately six hours each month.

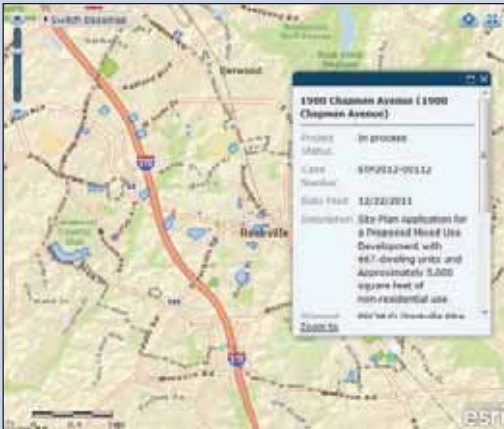
To volunteer for the board or bring a community issue forward call 240-777-8200 or email bethesda.citizen@montgomerycountymd.gov.

Development Watch

New Online Development Application Map Tool

Now it's even easier to find out about development applications in your neighborhood.

The Community Planning and Development Services (CPDS) Department has launched a new user-friendly online resource for citizens to follow development applications in the City of Rockville with a new interactive Development Project Application map. The new online map complements the existing CPDS development project status webpage at www.rockvillemd.gov/zoning/development by mapping applications that are in the review process and recently acted upon.



A citywide map is available for general browsing at the top of the webpage and specific project locations can be found by following links under each project's description.

Application details such as address, project description, land use and zoning designation and planning staff contact information can also be viewed as a pop-up bubble by clicking the project location on the map.

The new map can also be accessed on the City's Map Gallery webpage at <http://maps.rockvillemd.gov/gallery>, which includes a number of other useful City maps for general reference. The online map is one of many online tools provided by the Community Planning and Development Services Department designed to make City planning and construction more transparent and accessible and encourage public participation in the review process.

To find out more about the new map and other planning and building activities, contact the Community Planning and Development Services Department at 240-314-8200 or visit www.rockvillemd.gov/government/cpds.

Know the Process and Stay Involved

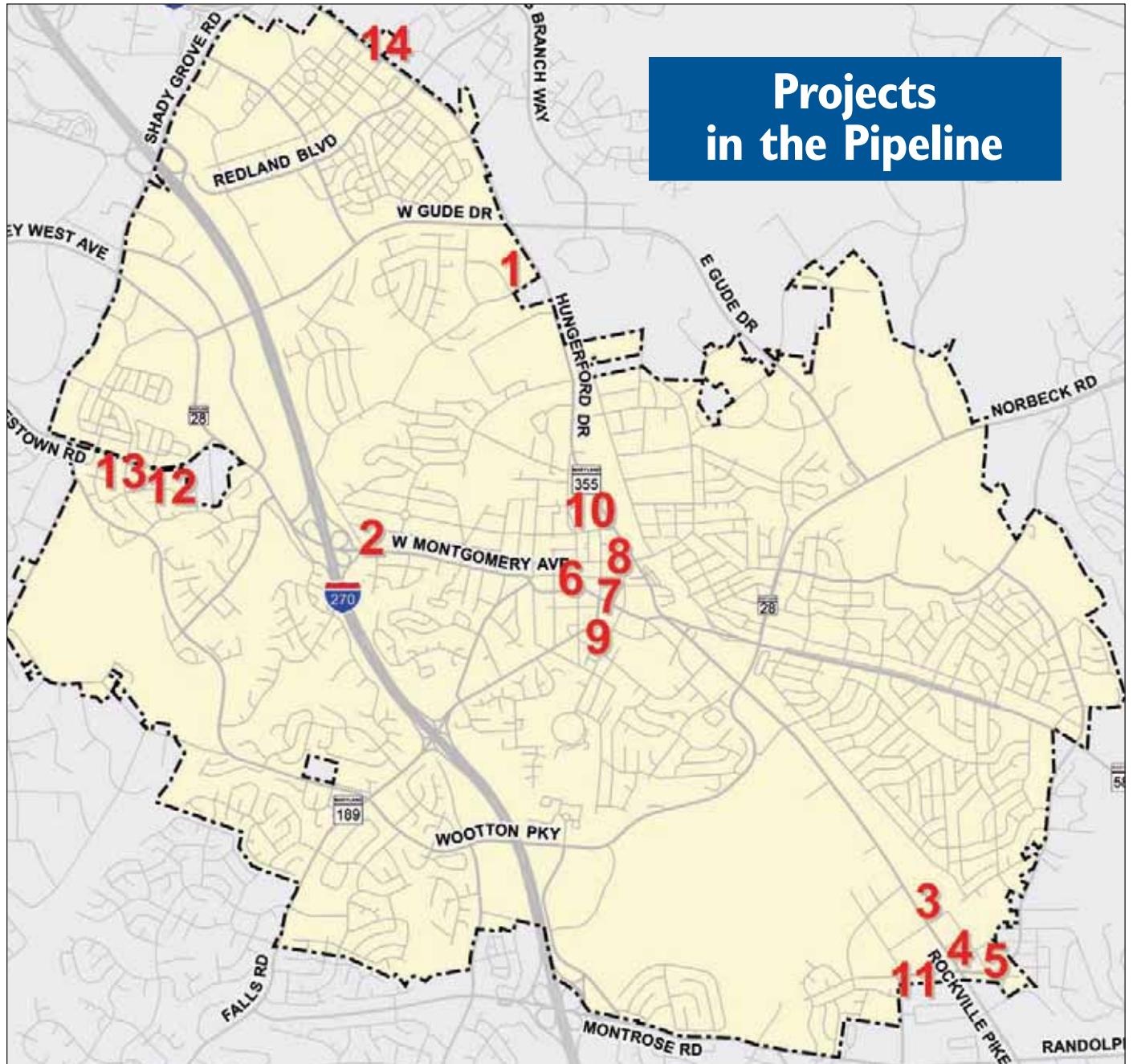
Rockville residents are encouraged to take part in decisions about development projects in the city.

To learn more about current and pending development projects in your neighborhood visit www.rockvillemd.gov and click on Development Projects under About Rockville on the right sidebar. Check the website often as the City makes information available as it is received.

How to Get Involved

- Check the City's website regularly at www.rockvillemd.gov for status updates on development projects in your neighborhood and throughout the city
- Contact the Planning and Zoning Division at (240) 314-8200 to find out more information about a specific project
- Attend an "area" meeting near you held by applicants for specific projects and public meetings held by the City for all other applications and general city business. Meeting schedules, agendas and information packets for the Mayor and Council is available on the City's website at www.rockvillemd.gov/government/mc, and for the Planning Commission, Historic District Commission and Board of Appeals at www.rockvillemd.gov/government/commissions.

Projects in the Pipeline



Pre-Application Submittals

The following development project applications have been submitted to the City for pre-application review.

1. **15190 Frederick Road (Auto Zone):** Pre-Application submittal for a proposed new 6,784 square-foot retail store. File #: PAM2011-00048
2. **727 West Montgomery Avenue (Seventh Day Adventist Church):** Pre-Application submittal for a proposed parking lot expansion at an existing place of worship. File #: PAM2011-00049

Applications In Process

The following applications and proposed development projects are currently in the development review process.

3. **1592 Rockville Pike (Twinbrook Metro Place):** Project Plan submittal for a proposed mixed-use development comprised of approximately 286,000 square feet of office, retail, restaurant and health club use, a 200-room hotel and 850 multi-family residential units. The application is scheduled to be acted upon by the Mayor and Council at their April 16 meeting. File #: PJT2012-00002
4. **1800 Rockville Pike (Twinbrook West):** Site Plan submittal for a proposed mixed-use development comprised of approximately 100,000 square feet of retail and restaurant use and 360 multi-family residential units. File #: STP2012-00101
5. **1900 Chapman Avenue:** A proposed mixed-use development with 667 multi-family residential units and approximately 5,000 square feet of non-residential use. File #: STP2012-00112

Approved Applications

The following applications and development projects were recently approved by the designated City Approving Authority.

6. **2 West Montgomery Avenue (Rockville Police Station):** Approved re-use and addition to the existing historic Post Office to become the new City of Rockville Police Department headquarters. Approved March 24, 2010 and

currently under construction. File #: STP2010-00027 and PLT2010-00499

7. **50 Maryland Avenue (Montgomery County Judicial Center):** Approved 200,000 square-foot addition to the existing Montgomery County Judicial Center. Approved March 10, 2010 and currently under construction. File #: STP2010-00017
8. **121 Hungerford Drive (Rockville Metro Plaza):** Approved Minor Site Plan amendment to a previously approved Use Permit. Approved April 29, 2011 and currently under construction. File #: STP2011-00073
9. **209 Monroe Street (Victory Housing):** Approved 86-unit residential senior living facility with an associated street closing/abandonment and a preliminary subdivision plan to create seven lots. Approved October 27, 2010. File #: SCA2006-00097, PLT2009-00498, PLT2011-00505, SPX2009-00378 and STP2010-00034
10. **430 Hungerford Drive (Walgreens Drugstore):** Site Plan submittal for a proposed drugstore in an existing commercial building. Approved March 14, 2012. File #: STP2012-00111
11. **1807 Rockville Pike:** Proposed commercial retail center including a bank with drive-through facility. Approved November 9, 2011 and currently under construction. File #: STP2011-00085
12. **9110 Darnestown Road (Kol Shalom Synagogue):** Approved new 30,379 square-foot place of worship. Approved June 9, 2010 and currently under construction. File #: PJT2009-00001, STP2010-00022 and PLT2010-00050
13. **9200 Darnestown Road (Brightview of Rockville):** Approved development of a 90-unit assisted living community. Approved May 25, 2011 and currently under construction. File #: SPX2010-00381, STP2011-00066 and PLT2011-00509
14. **15955 Frederick Road (Silverwood/Shady Grove, LLC):** Approved development of a five-story, 417-unit multi-family residential project on property approved for annexation to the City of Rockville. Approved October 26, 2011. File #: STP2011-00091 and ANX2010-00139

News You Can Use

IN AND AROUND ROCKVILLE

Prepare for the Future at Financial Workshop for Teens

The City of Rockville is partnering with local non-profit Take Flight, Inc., to host a Transition Workshop Saturday, April 28, 11 a.m. to 12:30 p.m. at the Twinbrook Community Recreation Center Annex, 12920 Twinbrook Parkway.

The workshop is designed for teens and young adults ages 16 to 24, and will focus on financial education and debt management.

Pre-registration is required; register for course number 38905. The cost for the workshop is \$3 for residents and \$5 for nonresidents.

For more information visit www.rockvillemd.gov/teens.

Montgomery County Historic Tax Credit Late Applications Accepted

Homeowners who have made improvements to their historic homes are encouraged to apply for an annual tax credit.

The deadline for the Montgomery County Historic Tax Credit Program was Friday, April 1, but late applications will be considered until Tuesday, April 10.

All properties designated under the City's Historic Preservation Program may qualify for a 10 percent property tax credit for exterior maintenance work of more than \$1,000 undertaken in 2011.

The Historic District Commission will review applications in May and June.

Applications are available at www.rockvillemd.gov/historic/tax-credit.html.

For more information email Robin Ziek, historic preservation planner, at rziek@rockvillemd.gov or call 240-314-8230.

Sponsorship Opportunities Available for Rockville Events Promote Your Business at Events with More Than 160,000 Attendants

The City of Rockville is now accepting sponsorship applications for its five largest 2012 events.

Potential sponsors may choose to support **Hometown Holidays**, **Out to Lunch Wednesdays**, the **Independence Day Celebration**, **Uncorked Wine and Music Festival** and/or the **Rockville Antique and Classic Car Show**. Combined, the events are attended by more than 160,000 people.

Sponsorship levels begin at \$200 per week for an Out to Lunch Wednesday event and go up to \$15,000 for a Hometown Holidays presenting sponsor. Additional sponsorship levels are available in various price ranges depending on the event.

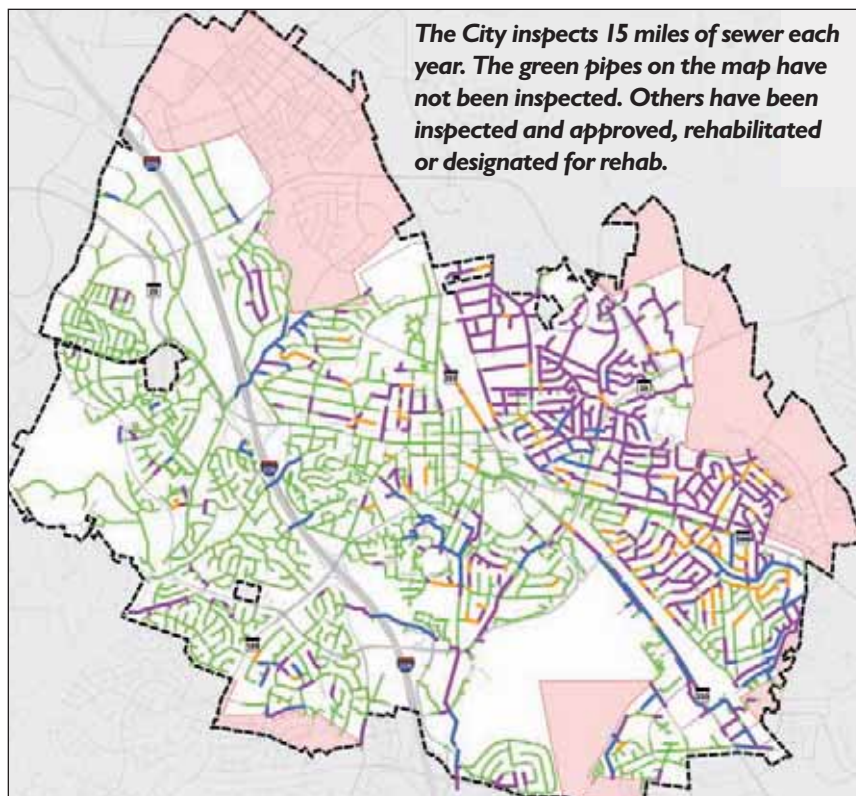
To explore the events, watch a short video and learn more about sponsorship opportunities, visit "Rockville Events: Helping Your Business Shine Bright" at www.rockvillemd.gov/events/sponsorship.

For more information contact Colleen McQuitty, special events manager, at 240-314-8606 or cmcquitty@rockvillemd.gov.

Online Red Light Camera Ticket Payment System Unavailable April 25 to May 7

During April and May the Rockville City Police Department will transition its red light camera citation system. Online payments of red light tickets will not be accepted between Wednesday, April 25, and Monday, May 7.

Red light camera tickets must be paid in person at City Hall, 111 Maryland Avenue, or via mail with a check to the City of Rockville, c/o Police Red Light Camera Payments, 111 Maryland Avenue, Rockville, Md., 20850.



The City inspects 15 miles of sewer each year. The green pipes on the map have not been inspected. Others have been inspected and approved, rehabilitated or designated for rehab.

and federal requirements.

The City's Department of Public Works is using robotic technology with closed-circuit television (CCTV) cameras to determine which sewer lines need to be replaced.

Two City CCTV trucks inspect 15 miles of sewer per year, by sending a camera through the pipe from manhole to manhole. The

video is watched and the condition of the sewers is evaluated and scored. The pipes and manholes with significant defects are prioritized for rehabilitation.

If a section of sewer is recommended for rehabilitation, it will be excavated and replaced, or it will be lined.

The CCTV sanitary sewer service inspection does

not impact water or sewer service.

The Sewer Main Rehabilitation CIP project funds the rehabilitation of all sanitary sewers identified through the Sanitary Sewer Preventative Maintenance program.

The operating budget funds the daily work to inspect and manage the sanitary sewer system across the City. It totals approximately \$1.4 million annually and includes equipment, material and personnel costs.

The Sanitary Sewer Preventative Maintenance Program is separate from the City's CIP Water Line Replacement Program which focuses strictly on the pipes that carry the City's drinking water to residents and businesses.

To see the CCTV trucks and cameras in action watch channel 11 or visit www.youtube.com/cityofrockville.

For more information about the Department of Public Works go to www.rockvillemd.gov/public-works, or contact Jim Woods or Brian Plymale at 240-314-8500. ✦

— Contributed by Jennifer Ligsay

Robotic Cameras Help Make Sanitary Sewer Infrastructure Improvements

Rockville's Sanitary Sewer Preventative Maintenance Program consists of comprehensive inspections of the sewer pipes and manholes within the City's wastewater collection

system. The multi-year plan looks at the City's sanitary sewer system in order to renew aging infrastructure, protect public health and the environment, and ensure compliance with state



Focus on Pedestrian Safety

Rockville Reflects on Road Safety

New Police Program Identifies Pedestrians and Cyclists

The Rockville City Police Department has a limited number of Rockville Reflects reflective bands available at no charge for community members. To obtain a reflector, stop by the Police Department at City Hall, 111 Maryland Avenue.

The Police Department urges drivers, pedestrians and cyclists to be on heightened alert when using Rockville's roadways and sidewalks. As the weather warms, more people share the roads and stormy spring weather can make it treacherous for pedestrians.

Pedestrians should wear reflective or brightly colored clothing such as reflective tags, bracelets or lanyards on outer garments and backpacks. The reflective item must face traffic to be effective and should be worn on a wrist, arm or



ankle to attract attention. A reflector will make you visible to the average driver at more than 300 feet with low beams and potentially more than 500 feet if the car has its high-beams on.

Rockville Reflects is one component of the City's comprehensive pedestrian safety initiative. For more information contact Lt. Eric Over at 240-314-8967 or eover@rockvillemd.gov. ✦

STAY SAFE ON THE ROADS
Reflective material is not just for runners. If you walk, run or ride, using any type of reflective material will greatly increase your chances of being seen at night.

Planned Sidewalk Construction to Improve Pedestrian Safety

The City of Rockville plans to construct seven sidewalk projects totaling approximately 10,000 linear feet during the spring and summer. The sidewalks will improve pedestrian safety, accessibility and mobility in neighborhoods across the community.

Construction of the first sidewalk project of the year will begin on **Lewis Avenue** in mid-April, followed by **Anderson Avenue** in early May.

The remaining five projects are located on **Avery Road**, **Gruenther Avenue**, **Linthicum Street** and **Wootton Parkway**.

The projects on Gruenther Avenue and Linthicum Street are funded through the Safe Routes

to School grant program and the others are funded through the Sidewalk

Capital Improvement Program (CIP).

Residents near the sidewalk projects will receive detailed information and a construction

schedule when available. At a minimum, residents will receive notice two weeks before construction begins.

For more information, contact Matthew Folden, transportation planner II, at 240-314-8509 or mfolden@rockvillemd.gov.

For more information about transportation-related projects, visit the Traffic and Transportation Division website at www.rockvillemd.gov/transportation. ✦



Enjoy a Tennis Play Day

Children ages 5 to 10 are invited to learn more about tennis fun and fitness during the Tennis Play Day, Sunday, May 6, 1 to 3 p.m. The event will be held at the King Farm Park Tennis Courts, 401 Watkins Pond Boulevard.

The play day will teach new tennis skills on smaller courts, sized just for kids.

Registration is required by Tuesday, April 24. Register for course number 38889; the cost is \$5 for Rockville residents and \$6 for nonresidents.

For more information contact Janet Opar, recreation programs supervisor, at 240-314-8632 or jopar@rockvillemd.gov.

Learn About Science at Expo

Rockville Science Day will offer the opportunity to launch rockets, program robots, meet reptiles and experiment with chemicals as part of the 23rd annual event Sunday, April 15, from noon to 5 p.m.

The event will be held at Montgomery College- Rockville Campus, 51 Mannakee St.



Parking and admission are free.

More than 60 exhibitors will be on hand at this year's Rockville Science Day to help families enjoy a day of learning and fun. Through hands-on activities participants can learn about the environment, alternative energy, space exploration and biotechnology.

Rockville Science Day is sponsored by the City of Rockville, the Rockville Consortium for Science, the Rockville Science Center and Montgomery College.

To learn more about the Rockville Consortium for Science and this annual event, visit www.rockvillescience.org or email scienceday@rocknet.org.

Family Friendly Shows Rule at the Theater in April

Families with children of all ages will find something to enjoy at the F. Scott Fitzgerald Theatre at Rockville Civic Center Park, 603 Edmonston Drive, this month.

HST Cultural Arts will present "Oz," Friday, April 13, at 6:30 p.m. and Saturday, April 14, at 5 p.m.; "The Taming of the Shrew," Friday, April 13, at 8 p.m. and Saturday, April 14, at 7:30 p.m.; "Let Your Hair Down Rapunzel," Friday, April 20, at 6:30 p.m. and Saturday, April 21, at 5 p.m.; and "How to Succeed in Business Without Really Trying," Friday, April 20, at 8 p.m. and Saturday, April 21, at 7:30 p.m. Tickets for the four HST Cultural Arts shows cost \$11 to \$13 and are available by calling 301-294-0520.

The Rockville Concert Band will present its annual "Young People's Concert: Animal Kingdom," Sunday, April 15, at 3 p.m. No tickets are required; a \$5 donation is suggested.

Adults will enjoy the Rockville Little Theatre presentation of "The Little Foxes," Fridays, April 27 and May 4, at 8 p.m.; Saturdays, April 28 and May 5, at 8 p.m.; and Sundays, April 29 and May 6, at 2 p.m. Tickets are available through the theater box office at www.rockvillemd.gov/theatre and cost \$14 to \$16.

For more information about upcoming shows at the theater visit www.rockvillemd.gov/theatre.

Gallery Features Local Talent

Whether you have decided opinions about visual arts or are new to the arts scene and want to learn more, the Glenview Mansion Art Gallery at Rockville Civic Center Park, 603 Edmonston Drive, has something to interest you this spring.

In April, the gallery will showcase the work of Carolyn Jean (assemblage, works on paper), Roslyn Logsdon (fiber, rug hooking), and the Tuesday Quilters (fiber). The show opened Sunday, April 1, at 1:30 p.m., and will run until Tuesday, April 24.



Later in the month, the annual Rockville Art League juried members' show will return to the gallery Sunday, April 29, through Tuesday, May 29.

For additional information about the exhibit and other monthly shows, visit the City's website at www.rockvillemd.gov/arts or contact Julie Farrell at 240-314-8682 or jfarrell@rockvillemd.gov.

Arts & Entertainment

Saturday Farmers Market Returns in May

Offering seasonal fruits, vegetables, flowers and plants, Rockville's popular weekly farmers market makes it easy to shop and eat locally.

New to market this year are Magnolia Bread Company, Zeke's Coffee and Go Fish.

The market is held Saturdays, May 12, to Nov. 17, 9 a.m. to 1 p.m. at the corner of Route 28 and Monroe Street.

The market offers your pick of locally grown farm-fresh fruits and vegetables, meat, cheese, fish, flowers, plants, baked goods and more. All items are picked fresh daily and available as supplies last.

A second weekly farmers market begins later this spring. The second market is

held Wednesdays, June 6, to Oct. 31, 11 a.m. to 2 p.m. on East Montgomery Avenue between Maryland Avenue



and Monroe Street in conjunction with Out to Lunch Wednesdays.

For a complete list of participating farms and vendors and a calendar of approximate harvest dates visit www.rockvillemd.gov/events.

ENJOY FRESH PRODUCE FROM FARM TO MARKET
Saturdays, May 12-
Nov. 17, 9 a.m.-1 p.m.

El Mercado de Granjeros funcionará nuevamente en mayo

El popular mercado semanal de granjeros de Rockville, que ofrece frutas, vegetales, flores y plantas de estación, hace que sea fácil ir de compras y comer localmente.

Los nuevos en el mercado este año son Magnolia Bread Company, Zeke's Coffee y Go Fish.

El mercado funciona los sábados, 12 de mayo al 17 de noviembre desde las 9 a.m. hasta la 1 p.m. en la esquina de Route 28 y Monroe Street.

El mercado le ofrece una variedad de frutas y verduras frescas de la granja cultivadas en la localidad, así como carne, queso, pescado, flores, plantas, productos horneados y mucho más. Todos los productos que se ofrecen se cosechan frescos en forma diaria y están

disponibles hasta agotar el suministro.

Un segundo mercado semanal de granjeros empezará sus actividades más adelante en la primavera. El segundo mercado se llevará a cabo los miércoles, del 6 de junio al 31 de octubre, de 11 a.m. hasta las 2 p.m. en East Montgomery Avenue entre Maryland Avenue y Monroe Street, conjuntamente con Out to Lunch Wednesdays.

Para obtener una lista completa de granjas y proveedores participantes y un calendario de las fechas aproximadas de cosecha visite www.rockvillemd.gov/events.

DISFRUTE LOS PRODUCTOS FRESCOS DE LA GRANJA AL MERCADO
Sábados, del 12 de mayo al 17 de nov., de 9 a.m. a 1 p.m.



Celebrate Ten Years at Croydon Creek Nature Center Festival

Celebrating 10 years of service to the community, the Croydon Creek Nature Center will host a Spring Festival and Native Plant Sale Saturday, April 28, from 1 to 4 p.m.

The free festival will feature indoor and outdoor family fun including:

- woodland hikes,
- nature games and crafts,
- exhibits,
- tables and demonstrations from festival partners the Wild Bird Center and the City's Environmental Management Division,
- live animal shows, and
- a rain barrel and native plant sale.

"We're very proud of the successful nature programs we have built during the past 10 years," said Elissa Totin, center supervisor. "We're

looking forward to reaching even more people with our education and outreach efforts during the next 10."

The center is located at 852 Avery Road on the grounds of the Rockville Civic Center Park.

Plant pre-orders are being accepted via order form on the nature center's website. Rain barrels will not be sold the day of the event, and must be pre-ordered for pick up at the festival. To pre-order a rain barrel, visit www.rainbarrelstl.com.

Additional anniversary events will be planned throughout the year.

Visit www.rockvillemd.gov/croydoncreek or call 240-314-8770 for more information.



Hometown Holidays Kicks Off Summer for the 24th Year

The 24th annual Hometown Holidays celebration will take place Memorial Day weekend in Rockville Town Center.

Each year more than 60,000 people descend on Rockville's downtown to celebrate the start of summer with more than 40 bands and entertainers performing on eight stages, children's and teens

activities, Taste of Rockville, a Craft Festival and Memorial Day ceremony and parade.

Rockville's Town Center is located one block from Metro and parking is available.

To learn more about Hometown Holidays, go to www.rockvillemd.gov/hth.



Celebrate Earth Day All Month

Each year Rockville celebrates Earth Day, which is April 22, with a variety of activities throughout the month of April, including trainings, stream cleanups and

festivals.

The following list highlights some of the events planned in Rockville during April. Additional details are on the City's website at [www.rockvillemd.gov/envi-](http://www.rockvillemd.gov/envi-ronment/earth-day.html)

[ronment/earth-day.html](http://www.rockvillemd.gov/envi-ronment/earth-day.html).

- **Green Business Certification Training**, Tuesday, April 10, 8:30-11:30 a.m.
- **Stream Cleanups**, 9 a.m. to noon Saturday, April 14
- **Invasive Plant Pull**, Sunday, April 22, 1-4 p.m.

- **Arbor Day Tree Planting**, Wednesday, April 25, at 11 a.m.

To learn more go to www.rockvillemd.gov/environment or www.rockvillemd.gov/croydoncreek.

FACILITIES ADDRESSES AND PHONE NUMBERS

- **Glenview Mansion Art Gallery** **GM**, Rockville Civic Center Park, 603 Edmonston Drive
- **F. Scott Fitzgerald Theatre** **FSF**, Rockville Civic Center Park, 603 Edmonston Drive
- **Croydon Creek Nature Center** **CC**, Rockville Civic Center Park, 852 Avery Road. Note: Registration required, register online at www.rockvillemd.gov or call 240-314-8770.
- **Rockville Senior Center** **SR**, 1150 Carnation Drive. Call 240-314-8800.
- **Rockville City Hall** **CH**, 111 Maryland Ave. Call 240-314-5000.

April/May Calendar

RES = Residents • NR = Non Residents • MEM = Member • NM = Non Member

to 11:30 a.m., Glenview Mansion at Rockville Civic Park. For more information or to register, visit www.rockvillechamber.org. FREE **GM**

12 Nature Tots –Turtles Spend time with your child ages 2-5 discovering the wonders of nature, 10-11:30 a.m. A naturalist will help you explore a new nature topic. Space is limited, so register in advance. \$6 RES/ \$7 NR **CC**

13,14 Oz presented by HST Cultural Arts Join Dorothy, Toto and her friends as they find their way back home from Oz, Friday, April 13, at 6:30 p.m. and Saturday, April 14, at 5 p.m. at the F. Scott Fitzgerald Theatre. Tickets: \$11-\$13, only available by calling 301-294-0520. **FSF**

13,14,20,21 The Secret Garden Richard Montgomery High School's spring musical production is sure to entertain and delight. Showtime is 7 p.m. Online tickets cost \$5 for students and \$13 for adults; at the door tickets cost \$6 for students and \$14 for adults. Buy online tickets at <https://richardmontgomerydrama.ticketleap.net/>.

13,14 The Taming of the Shrew by HST Cultural Arts Can ferocious Kate be tamed so her younger sister can marry? Join us for this comedy Friday, April 13, at 8 p.m. and Saturday, April 14, at 7:30 p.m. at the F. Scott Fitzgerald Theatre. Tickets: \$11-\$13, only available by calling 301-294-0520. **FSF**

14 Annual Potomac Watershed Stream Clean Ups Help the environment and earn Student Service Learning (SSL) hours between 9 a.m. and noon by cleaning up streams throughout the city. Children younger than 14 must be accompanied by an adult. See website for details. FREE

14 RBBA Opening Day Opening Day Join the Mayor and Council for the opening of baseball season at Dogwood Park. See page 3 for details. FREE

14 VisArts Invasive Plant Harvest and Paper Making Workshop At this hands-on workshop, participants will harvest invasive plants and return to the art studio to explore ways of isolating paper making fibers, cordage and pigments. Participants should bring boots, leather gloves and garden pruners. See www.visartsatrockville.org for more information.

15 Rabies Clinic Take advantage of this low-cost program to keep your pet healthy and safe. See page 8 for details.

15 Rockville Science Day Learn about the interesting natural phenomena that impact life in the community. See page 6 for details. FREE

15 Young People's Concert: Animal Kingdom The Rockville Concert Band performs its annual show for families at 3 p.m. No tickets required, \$5 suggested donation at the door. **FSF**



18 Fused Glass Jewelry Colored glass and dichroic glass can be fused together to make beautiful pieces of wearable art. A limited amount of pre-cut glass will be ready for you to design your very own one-of-a-kind pendant and earring set from 1 to 2:30 p.m. Register for course #38749; cost is \$25 MEM/\$30 RES/\$40 NR. **SR**

18 Go Green Lecture – Urban Forestry Meet our City forester and learn everything you wanted to know about trees, 7-8 p.m. Ages 16 and older. FREE **CC**

19-May 24 Life Trail Outdoor Fitness Try this introductory program Thursdays, 9-9:30 a.m. as part of our outdoor fitness system, located in the rear of the senior center. Enjoy a great workout outdoors! Register for course #38954; cost is \$15 MEM/\$17 RES/\$20 NR. **SR**

20,21 Let Your Hair Down Rapunzel by HST Cultural Arts How did the beautiful maiden end up in a tower and have to let her hair down? Find out Friday, April 20, at 6:30 p.m. and Saturday, April 21, at 5 p.m. at the F. Scott Fitzgerald Theatre. Tickets: \$11-\$13, only available by calling 301-294-0520. **FSF**

20 How to Succeed in Business Without Really Trying by HST Cultural Arts The entire family will enjoy this Broadway musical that pokes fun at 1950's corporate America, Friday, April 20, at 8 p.m. and Saturday, April 21, at 7:30 p.m. at the F. Scott Fitzgerald Theatre. Tickets: \$11-\$13, only available by calling 301-294-0520. **FSF**

21 Spring Community Outdoor Yard Sale Check out the bargains or sign up as a vendor to sell your treasures at the Richard Montgomery High School parking lot. Vendors must pre-register with payment. Set up 7-8 a.m.; sale 8 a.m.-noon. For a table, register for course #39045; cost: \$20.

21 Twinbrook Planting Celebrate Earth Day and help the environment with a volunteer planting project at the Twinbrook Community Center, 12920 Twinbrook Parkway, 9 a.m.-noon. Student Service Learning (SSL) hours are available. For more information, email environment@rockvillemd.gov.

21 Saturday Story and Hike Stop by the nature center with your 2 to 5 year old on Saturday mornings, 10-11 a.m. for story-time and a craft. A naturalist will read a story then lead a craft based on the theme of the story. All children must be accompanied by an adult. \$3 RES/ \$5 NR **CC**

21 Croydon Creek Campfire – Celebrate Earth Day Learn the history behind Earth Day, take tips from Mother Nature and find fun and easy ways for you and your family to be more earth friendly, 7:30 to 8:30 p.m. All ages are welcome. \$4 RES/ \$5 NR **CC**

22 Sunday Book Club Join Lincoln Park's Book Club and share your love of reading and perspective on the selection of the month. The April selection is "The Wedding Gift" by Marlen Suyapa Bodden. See the website at www.rockvillemd.gov/lpcc for more information and to register.

22 Invasive Species Pull Help us eliminate invasive plant species in the John Hayes Forest Preserve, 1-4 p.m. Time spent is eligible for Student Service Learning (SSL) hours. Gloves and bags are provided. Children younger than 14 must be accompanied by an adult. No registration is required. FREE **CC**

24 Tiny Tots Spring Time Festival Kids five and younger can crawl, run and explore in the gym, 10 a.m.-noon, at Thomas Farm Community Center, 700 Falls Grove Drive. Requires a membership or day pass for adults and a \$2 fee at the door per child.

25-May 30 Cancer Survivors Workshops A certified cancer exercise specialist and survivor teaches a series of six workshops Wednesdays, 8:45-9:30 a.m., at the senior center. Register for course #39000; cost is \$50 MEM/\$60 RES/\$70 NR. **SR**

25 Arbor Day Tree Planting Rockville will commemorate Arbor Day with a tree planting event at 11 a.m. at the corner of East Montgomery Avenue and South Washington Street.

25-27 School of Rock(ville) High school students in Rockville have the chance to learn about local government. See page 1 for details.

26 Nature Tots - Flowers Spend time with your child (ages 2-5) discovering the wonders of nature, 10-11:30 a.m. A naturalist will help you explore a new nature topic through nature play, crafts, stories and hikes. Space is limited, so register in advance. \$6 RES/ \$7 NR **CC**

27,28,29,May 4,5,6 The Little Foxes by Rockville Little Theatre The ruthless, moneyed Hubbard family lives in, and poisons, their part of the deep South at the turn of the 20th century in this caustic and engaging tale, Fridays and Saturdays, at 8 p.m. and Sundays, at 2 p.m. Tickets: \$14-\$16 through the F. Scott Fitzgerald Theatre Box Office. **FSF**



28 Spring Festival and Native Plant Sale Help us celebrate the nature center's 10th anniversary with a spring native plant sale, live animal show, face painting, woodland hikes, rain barrel sale and more, 1 to 4 p.m. FREE **CC**

28 Debt Management Transition Workshops w/ Take Flight Inc. Join us for a workshop for teens and young adults (ages 16-24) focusing on debt management, 11 a.m.-12:30 p.m. at the Twinbrook Community Recreation Center – Annex, 12920 Twinbrook Parkway. Register for course #38905; cost: \$3 RES/\$5 NR.

29-May 29 Glenview Mansion Gallery Art Show The Rockville Art League returns with its annual juried show. See page 6 for details. FREE **GM**

30 Environmental Excellence and Photo Contest Award Ceremony See page 3 for details. FREE **CH**

May

6 Tennis Play Day Boys and girls ages five to 10 are invited to our play day. See page 6 for details.

6 Citizen Science Series - Stream Monitoring This on-going series will introduce participants to different citizen science opportunities in our area. Learn how you can get involved in the City's "Save Our Streams" program by becoming a regular volunteer, 1:30-3 p.m. \$6 RES/ \$8 NR **CC**

10 Nature Tots - Bees Spend time with your child, ages 2-5, between 10 and 11:30 a.m., discovering the wonders of nature. A naturalist will help you explore a new nature topic through nature play, crafts, stories and hikes. Dress for the weather. Adult participation required. \$6 RES/\$7 NR **CC**



Celebrate Mother's Day with your princess at a Royal Tea Party – May 12.

12 Farmers Market Opening Pick up the freshest produce, baked goods and more as the Rockville Farmers Market begins the season. See page 6 for details.

12 Peerless Rockville Homes and Hospitality Tour Featuring a variety of beautiful and historic homes in the East End of Rockville. Visit at your own pace between 1 and 5 p.m. Advance tickets cost \$22; call 301-762-0096 or visit www.peerlessrockville.org.

12 Royal Tea Party Princesses and their royal families are invited to celebrate Mother's Day at Thomas Farm Community Center's annual event, 2-4 p.m. The center is located at 700 Falls Grove Drive. Registration is required, register for course #38074; cost: \$10 RES/\$12 NR.

Boards and Commissions

Meetings are held at City Hall, 111 Maryland Ave., unless otherwise noted.

4,May 2 Rockville Bike Advisory Committee 7:15 p.m. Meets the first Wednesday of the month.

10,May 8 Environment Commission 7:30 p.m. Meets the second Tuesday of the month.

11,25, May 9 Planning Commission 7 p.m. Meets the second and fourth Wednesday of the month.

11, May 9 Cultural Arts Commission 7 p.m. Meets the second Wednesday of the month.

11, May 9 Sister City Corporation 7:30 p.m. Meets the second Wednesday of the month.

19 Senior Citizens Commission 1 p.m., Rockville Senior Center, 1150 Carnation Drive. Meets the third Thursday of the month.

19 Historic District Commission 7:30 p.m. Meets the third Thursday of the month.

17 Rockville Seniors, Inc. 1 p.m., Rockville Senior Center, 1150 Carnation Drive. Meets the third Tuesday of the month.

18 Rockville Housing Enterprises 6:30 p.m., 621-A Southlawn Lane. Meets the third Wednesday of the month.

24 Traffic and Transportation Commission 7:30 p.m. Meets the fourth Tuesday of the month.

25 Human Rights Commission 7 p.m. Meets the fourth Wednesday of the month.

Rockville offers a variety of classes and programs each season. Find something that interests you at www.rockvillemd.gov and click on recreation registration on the right side.

For the most up-to-date event listings visit www.rockvillemd.gov or sign up for the E-Letter: Just click on "subscribe to news" on the left side of the home page, enter your name and email, and choose City Events.

April

1-24 Glenview Mansion Gallery Art Show Showcasing the work of Carolyn Jean, Roslyn Logsdon and the Tuesday Quilters. See page 6 for details. FREE **GM**

7 Breakfast with the Bunny The bunny is making a special trip to Thomas Farm Community Center, 700 Falls Grove Drive. Enjoy a light continental breakfast, egg hunt, pictures with the bunny and more, 10 a.m.-noon. Pre-registration is recommended, register for course #38073; cost: \$10 RES/\$12 NR.

9 Spring Leaf Collection Begins Get your yard ready with the first leaf collection of the year. See the City's website for details.

9 Safety Awareness and Self Defense with the Chief Learn basic safety tips and moves from Rockville City Police Chief Treschuk at Twinbrook Community Recreation Center, 129020 Twinbrook Parkway, 7-9 p.m. Register for course #38891; cost: \$5 RES/\$7 NR.

10 Montgomery County Green Business Certification Program Help your business go above and beyond basic green measures to reduce its ecological footprint, 8:30

FOR MOST UP-TO-DATE EVENT LISTING VISIT WWW.ROCKVILLEMD.GOV

Plant a Tree to Save Money
 Pepco and Arbor Day Foundation Giving Away Trees to Save Energy

Pepco is working with the Arbor Day Foundation to educate customers about energy conservation and provide energy-saving trees on a limited basis.



By planting the "right tree in the right place," customers can produce a landscape that will cool their home in the summer, tame winter winds and avoid collisions with power lines and buildings.

- To claim a two to four foot tree for planting:
- Visit <http://energysavingtrees.arborday.org>;
 - Map your house using the online mapping function;
 - Learn about the best trees and placement of trees to plant in your yard;
 - Calculate your energy savings; and
 - Submit your information to the Arbor Day Foundation and Pepco.

Rockville is home to one of the most robust tree canopies in Maryland. Contribute to the beautification and cooling of the community by taking advantage of this program while supplies last.

Rockville Accepting Grant Applications for Neighborhood Improvements

As part of the Rockville Organizing Communities and Neighborhoods (ROC-N) Matching Grant Program, neighborhood and community organizations may apply for City funds.

The deadline to apply is Sunday, April 15.

The grants provide neighborhood and community organizations funding to encourage community building, outreach and involvement.

Last year's grants were used for community beautification projects and neighborhood events.

For more information visit www.rockvillemd.gov/neighborhoods. To submit a proposal, visit the website, download and complete the application, and return it via mail to the City of Rockville, c/o Neighborhood Resources Division, 111 Maryland Avenue, Rockville, Md., 20850.

Low-Cost Rabies Clinic Offered in April

Dogs, cats and ferrets in Maryland are required by law to be vaccinated against the rabies virus and pets in the City of Rockville are required to be licensed. Obtain the rabies virus and a pet license at a low-cost clinic Sunday, April 15, between 10 a.m. and noon at the Montgomery County Animal Shelter, 14645 Rothgeb Drive.

Additional clinics will be held Sundays, May 20, June 17, July 15, August 19 and September 16.

Vaccinating your pet protects it against the deadly rabies virus and helps reduce the likelihood of transmission from wild animals to humans.

Support the Rockville Scholarship Foundation

The Rockville Scholarship Foundation has been providing financial support to community members pursuing post-secondary education for more than 20 years. Become a part of this tradition of excellence by donating to the foundation.

To contribute, mail a check to the Rockville Scholarship Foundation, Inc., P.O. Box 4778, Rockville, MD, 20849-4778.

Eight students demonstrating academic excellence and superior extracurricular involvement were selected by the Rockville Scholarship Foundation (RSF) to receive college scholarship grants for the 2011-2012 academic year: **Rae Blanco, Julio Cruz, Desmond Ellis, Ndatta Fall, Crystal Hulse, Angela Lee, Briana Liu and Marianne Mullan** will each be awarded up to \$1,500 toward their higher-education costs.

For more information about the students and the Rockville Scholarship Foundation, visit www.rs-foundation.net.

Neighborhood Notes

Rockville Parks Are Swinging Into Spring Meet Your Neighborhood Parks

This is the first in a series in Rockville Reports and on Rockville Channel 11 profiling Rockville's parks and open spaces. The City has four categories of parks: citywide parks, neighborhood parks, athletic parks and open space.

This month the focus is on the City's 39 neighborhood parks. These parks are recreational open space within easy walking or cycling of residential areas. Neighborhood parks typically include tot lots or playgrounds, with walking paths and sitting areas and may have picnic shelters, ball fields and sports courts.

Here is a sample of a few of the City's neighborhood parks:

• **Silver Rock Park** (Claggett Drive and Maple Avenue): The City obtained Silver Rock Park in 1954. This Twinbrook neighborhood park was developed in 1960 and boasts a picnic area, playground and volleyball area.

- **Autre St. Mary's Park:** Located on Tweed Street (and formerly called Tweed Park), the only access to this one-acre park is on two walking paths between houses from Tweed Street or Linthicum. This park houses the second oldest cemetery in Rockville and is part of the property that was the home of Caleb Pollockefield Litton in the 1700's.
- **Memory Walk:** At Lincoln and Douglas Avenues, this memorial pathway about historic Lincoln Park was part of an art project commissioned 12 years ago. The stepping stones in this park were designed by artists and represent the neighborhood.
- **Grandin Park** (704 Grandin Ave.): At the site of the former City water tower, this pocket park is beautifully landscaped with a brick pathway, playground and picnic area.
- **Potomac Woods Park** (2276 Dunster Lane): This 42-acre park was developed in the 1960's and includes ball fields, basketball and tennis courts and picnic areas.



Rockville maintains 65 parks and open space sites including more than 1,000 acres available for family fun, picnics and birthday rentals and many outdoor activities.



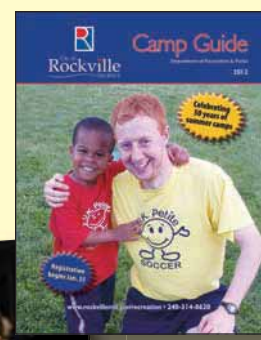
For more information

about Rockville's parks, watch channel 11 on television or online at www.youtube.com/cityofrockville, or visit www.rockvillemd.gov/parks-facilities.
 — Contributed by Bridget Broullire

Spend Your Summer at Camp

Play sports and games, create art, conduct science experiments, explore nature and more.

Camps for ages 5-12 • Aftercare available • Transportation provided
 Convenient locations • Affordable sessions



For more information or to register:
 240-314-8620 or www.rockvillemd.gov/recreation.



Scan this QR code with your smartphone to visit the City of Rockville's website. If you don't already have a QR code reader on your phone, there are plenty of free apps you can download. When you have an app installed, point your phone's camera at the code and the website will appear in your phone's web browser.



Get Into It

Mayor
 PHYLLIS MARCUCCIO
 Councilmembers
 JOHN F. HALL, JR.
 TOM MOORE
 BRIDGET DONNELL NEWTON
 MARK PIERZCHALA

Acting City Manager:
 Jennifer Kimball
 Communication Manager:
 Marylou Berg
 Public Information Specialist:
 Shannon Loomis
 Graphics & Printing Div.:
 Sylvia England, Eric Ferrell, Nikita Jones, Leon Porter, Lori Russler, Nancy Zombolas

Rockville Reports is the official publication of the Mayor and Council, published at City Hall, 111 Maryland Ave., Rockville, MD 20850-2364. It is delivered to all residents of Rockville. Phone 240-314-8105. Any individuals with disabilities who would like to receive the information in this publication in another form may contact the Americans with Disabilities Act Coordinator at 240-314-8100; TTY 240-314-8137.