

Streetscape Elements

A successful neighborhood is not complete until its open space, streets and sidewalks have been “furnished”. The items that are referred to as streetscape elements in this guideline include such things as sidewalks, benches, trash receptacles, etc. These are the elements that help to reinforce the character of the neighborhood. Other items such as fountains and kiosks fit into this category and are included in this guideline, but are of course, more selective and dependent on specific locations on the plan.

The following section addresses a full “catalog” of streetscape elements that are to be considered as part of the overall Town Center vocabulary. The catalog is meant to establish a minimum standard for streetscape elements, and encourages developers and designers to place as much importance on the selection of these elements as they do on the architecture and open space design. Rockville Town Center as a whole will only be as good as the sum of “all” of its parts.



Streetscape Elements

Street Paving

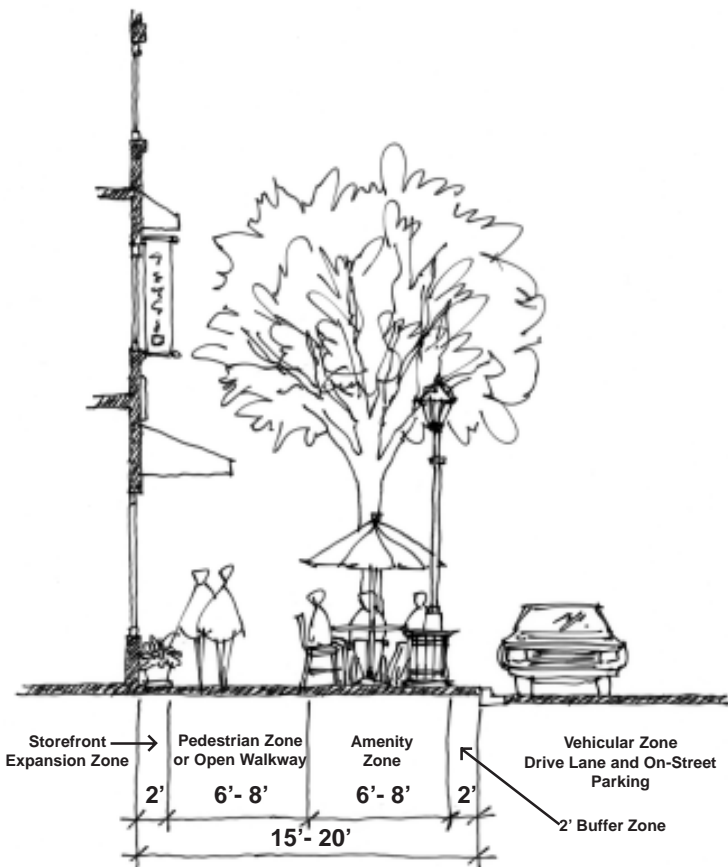
- *Should typically be asphalt*
- *Special areas such as the Town Plaza extension should be executed in concrete, brick or asphalt pavers or stamped asphalt or concrete*
- *Paving patterns, colors and textures should complement surrounding streets and buildings*
- *Should reflect or complement other existing street paving in the Town Center*



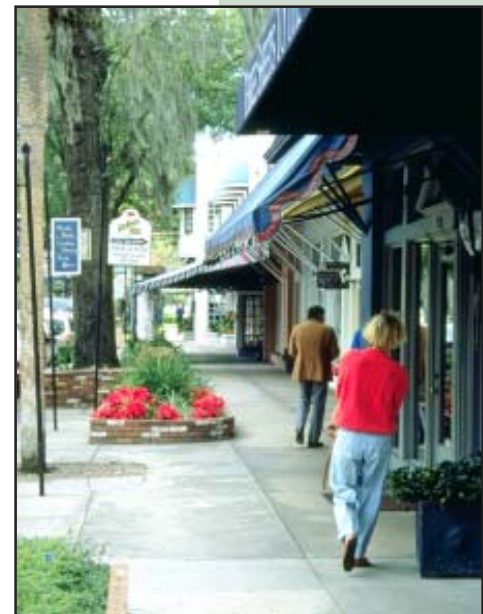
Streetscape Elements

Sidewalks

- Should be comprised of a “pedestrian zone” nearest the facade for building access and window shopping and an “amenity zone” nearest the curb for trees, plantings, street furnishings and cafe seating when there is sufficient width
- Should have a higher level of finish on pedestrian oriented, mixed-use streets (pavers, colored stamped concrete, etc.)
- May be predominately concrete with accent pavers on secondary streets
- Openings for planters should be provided in the amenity zone and should be consistent with street tree plan



NOTE: Dimensions will vary depending on location



Sidewalks

Section 13.3

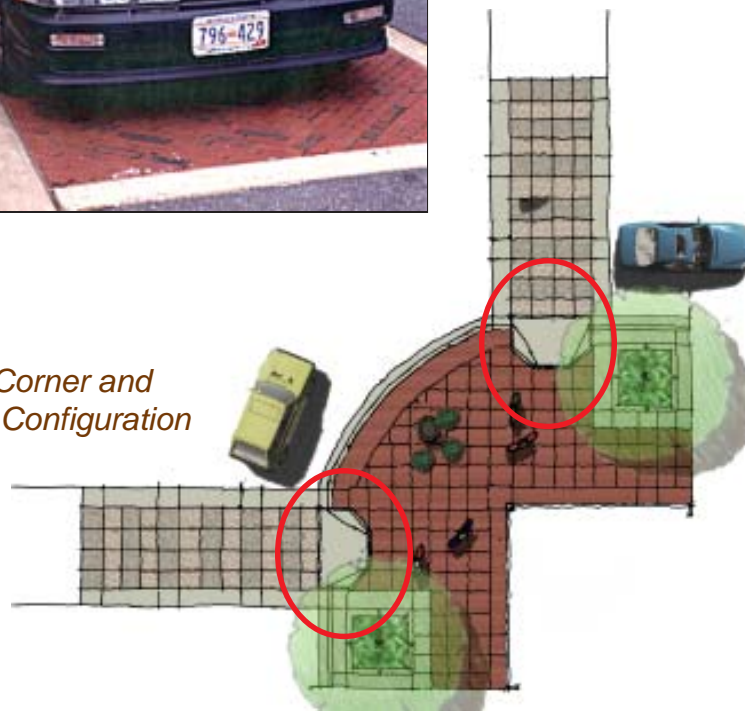
Streetscape Elements

Curbs & Curb Ramps

- Should be placed at all crosswalks in Rockville Town Center and should align with similar curb ramps across the street
- Curb ramp materials should be the same as those used for sidewalks
- “Curbless” conditions may exist to accommodate special situations such as street fairs or festivals
- Should adhere to all applicable ADA requirements



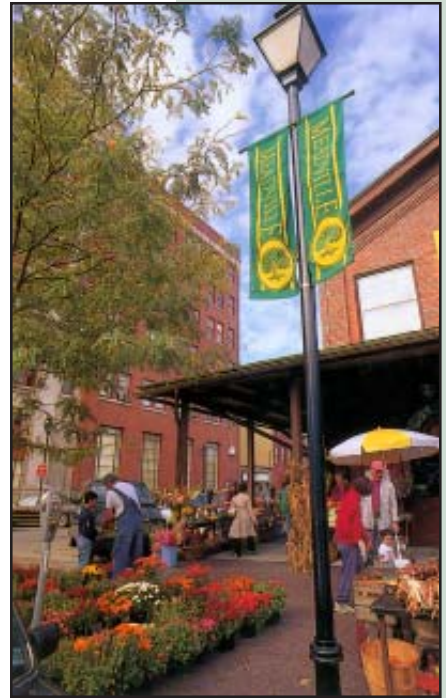
Typical Corner and Crosswalk Configuration



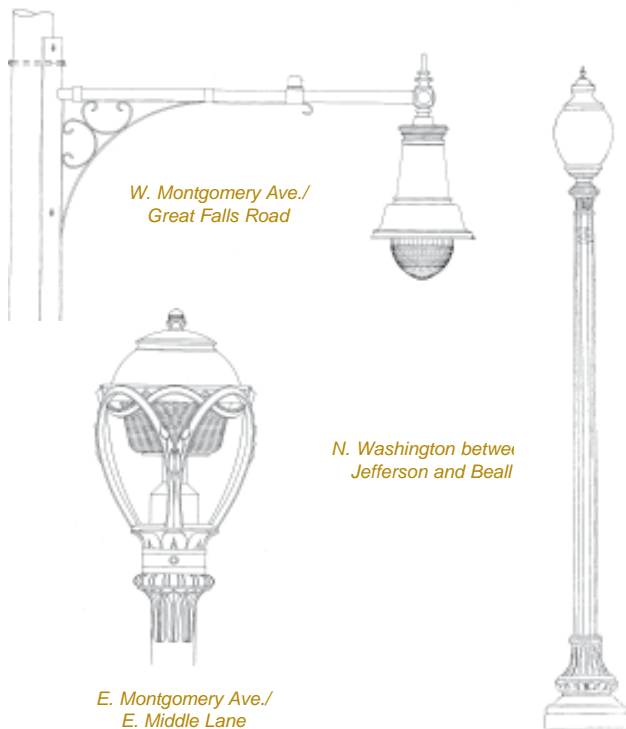
Streetscape Elements

Street Lighting

- *Should be located as part of the streetscape and function as a unifying element of other streetscape items including trees, benches and paving*
- *Should be located at the same distance from the street edge along the length of the entire street*
- *Style should integrate and complement the architectural vocabulary of Rockville Town Center by integrating the free-standing globe fixtures used on N. Washington (see below)*
- *Fixtures should exhibit an aesthetic as well as functional purpose to create interest and a sense of scale for the pedestrian*
- *Luminaires should be translucent or glare-free using opaque glass or acrylic lenses*
- *Diffusers and refractors should be installed to reduce unacceptable glare; particularly adjacent to residential areas*



Existing Rockville Street Lighting



Street Lighting

Section 13.5

Streetscape Elements

Special Effects Lighting

- *May include string lighting in trees or up-lighting on trees*
- *Fixtures should blend in with surroundings*
- *Should be waterproof and light should be shielded so as not to impair a pedestrian's vision or vehicular traffic*



Streetscape Elements

Seating, Benches & Bus Shelters

- *Should be grouped together as much as possible and be placed at busier pedestrian nodes or gathering places*
- *Should be designed and placed appropriately to provide an amenity to the public*
- *Can be manifested in permanent planter edges*
- *Should not obstruct views for vehicles, sidewalks for pedestrians, or signs and displays for businesses*
- *Should blend in with the surroundings or be specified in a complimentary accent color*
- *Outdoor cafe seating should also follow the guidelines listed above and recognize the designated amenity zone as the proper placement for such*
- *Bus shelter locations should be coordinated with streetscape design*



Streetscape Elements

Fountains

- *Should be located in key public areas such as the Town Square or at street corners where they help attract attention and draw in pedestrians*
- *Should allow for ample pedestrian circulation on all sides*
- *May be designed to encourage “sitting” along the edges or interaction from the public via choreographed movement*



Streetscape Elements

Public Art

- Should be “accessible” physically and intellectually
- Should tie to the history of Rockville or tell a story significant to Rockville; if possible, should be created by a local source
- Should be considered as part of a collection or Rockville art program, not a single piece
- May include water, seating, planting, decorative architectural elements or plaza space as part of the design
- Should be visible, but not interfere with pedestrian circulation or create a traffic hazard
- Should be made of durable, weatherproof materials
- Should be crafted, not “sharp”
- Should be designed to avoid physical hazards to the public who come in contact with it
- Should avoid locating any free-standing vertical pieces within the area designated for performing arts functions
- Should be consistent with Town Center Arts Plan



Streetscape Elements

Kiosks

- *Should be used for retail purpose or to impart community information to the public*
- *Should be positioned to complement and respect other street furnishings such as benches and lighting*
- *Should be accessible and attractive from all sides and well-illuminated*
- *Should be flexible to allow for up-to-date information*
- *Should consider fixed kiosks to project a sense of permanence with other fixed surroundings*
- *Are not required to be fixed and may be mobile to allow for flexibility in public areas*



Kiosks

Section 13.10

Streetscape Elements

Tree Grates

- *Should be used wherever a tree is placed within a high traffic area*
- *Should allow for tree growth and be made of ductile iron; should also be factory painted*
- *Electrical outlets should be provided within the grate area to allow for lighting opportunities*
- *Should be designed to support uplighting*



Planting Pots & Planters

- *Used in addition to landscape planting areas to compliment the surrounding streetscape by adding color and variety*
- *Can be placed anywhere pedestrian or vehicular traffic is not disturbed, but may function as a separation between pedestrians and vehicles*
- *Large pots are preferred to fixed boxes to allow for maintenance or service access*
- *Ideal near seating areas, but plant materials should not interfere with circulation or comfort*



Tree Grates/Planting Pots & Planters

Streetscape Elements

Trash Receptacles

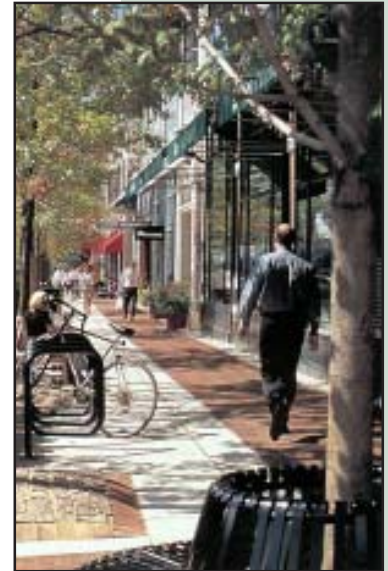
- *Should be located conveniently for pedestrian use and service access in significant areas and gathering places*
- *Should be permanently attached to deter vandalism and have sealed bottoms with sufficient tops to keep contents dry and out of pedestrian view*
- *Restaurants with outdoor seating should provide additional trash receptacles near seating*
- *Should blend in with the surroundings or be specified in a complimentary style or accent color*



Streetscape Elements

Bicycle Racks

- *Should be permanently mounted and placed in convenient locations throughout public spaces to encourage bicycle use*
- *Should be placed so as not to obstruct views or cause hazards to pedestrians or drivers*
- *Should exhibit a simple and easy design that allows for convenient and safe use by the public*



Bollards

- *Should integrate with and aesthetically complement the overall streetscape concept*
 - *Design should respond to the area it supports (Plaza vs. Services)*
 - *Should be setback from curbs to allow un-obstructed opening of parked car doors*
- May be chained or cabled together to ensure pedestrian safety or define areas for public functions*
- *Removable bollards should be used where service vehicles need access and for street closures in the event of festivals or community events*



Streetscape Elements

Utility Accessories

- *Includes utility boxes, meters, man hole covers and fire hydrants; should be coordinated with other streetscape accessories*
- *Readily accessible and placed so as not to obstruct pedestrian movement*
- *Minimize visual and physical impact as much as possible*
- *Should blend in with the surroundings or enhance the area*



Newspaper Racks

- *Should be grouped together as much as possible and be placed at busier pedestrian nodes or gathering places*
- *Should be designed and placed appropriately to provide a service to the public*
- *Should not obstruct views for vehicles, sidewalks for pedestrians, or signs and displays for businesses*
- *Should blend in with the surroundings*

