

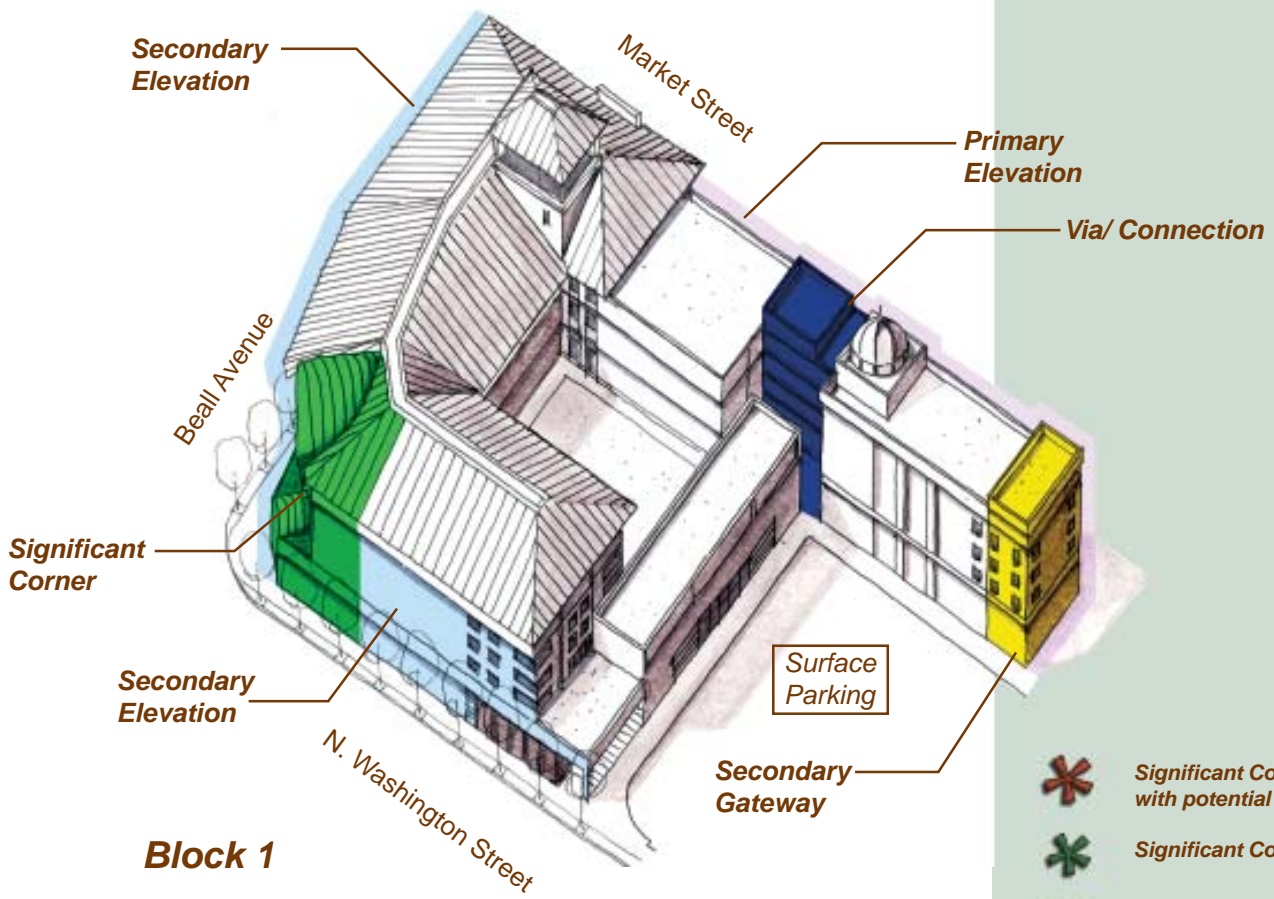
Key Elements By Block

The following matrix strives to illustrate how the Key Urban Elements in the previous section are applied to specific “blocks” in the Rockville Town Center Plan. As you can see, Blocks 1 and 2 incorporate all of the Key Urban Elements, while Blocks 3A, 3B, 4 and 5 illustrate most, but not all of these characteristics. A close-up review of each “block” and its relationship to the plan follows.

	Primary Elevations	Secondary Elevations	Significant Corners	Gateways	Vias
Block 1					
Block 2					
Block 3A					
Block 3B					
Block 4					
Block 5					

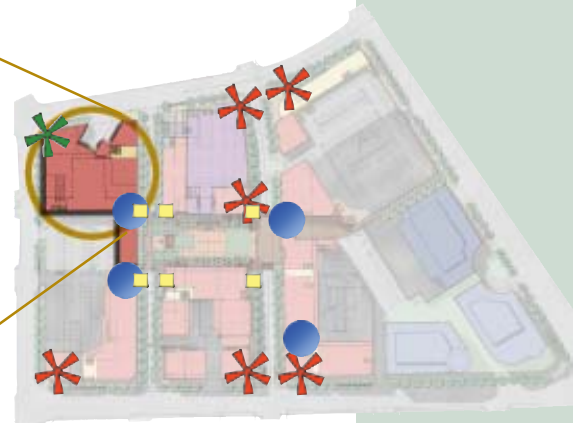
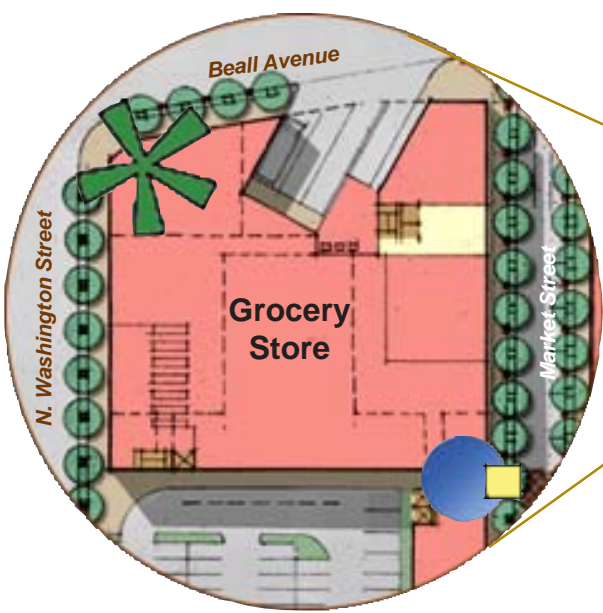


Key Elements By Block



Block 1

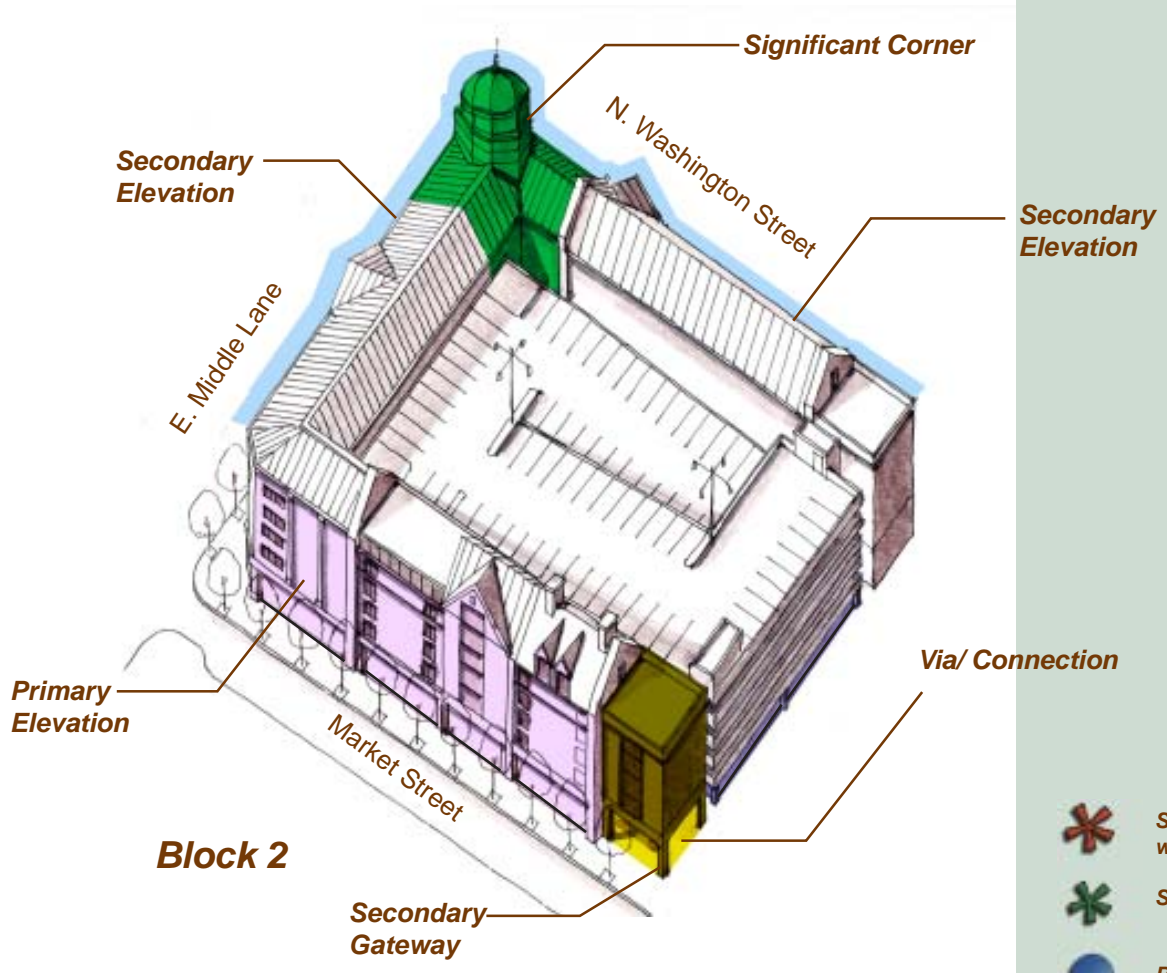
-  Significant Corner with potential entry
-  Significant Corner
-  Pedestrian Via
-  Gateway



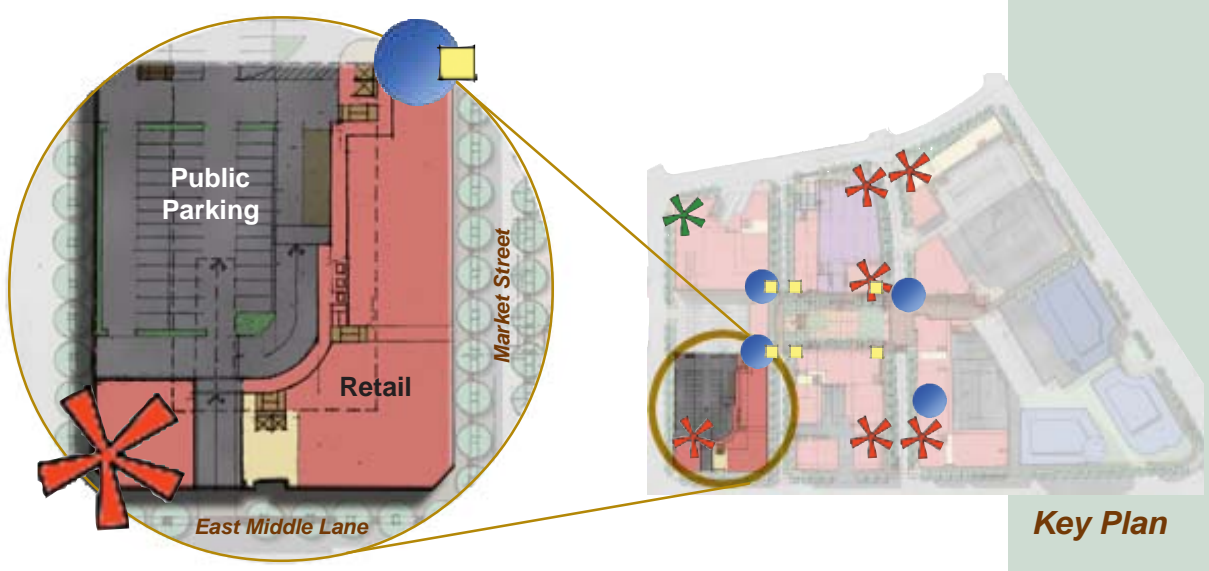
Key Plan



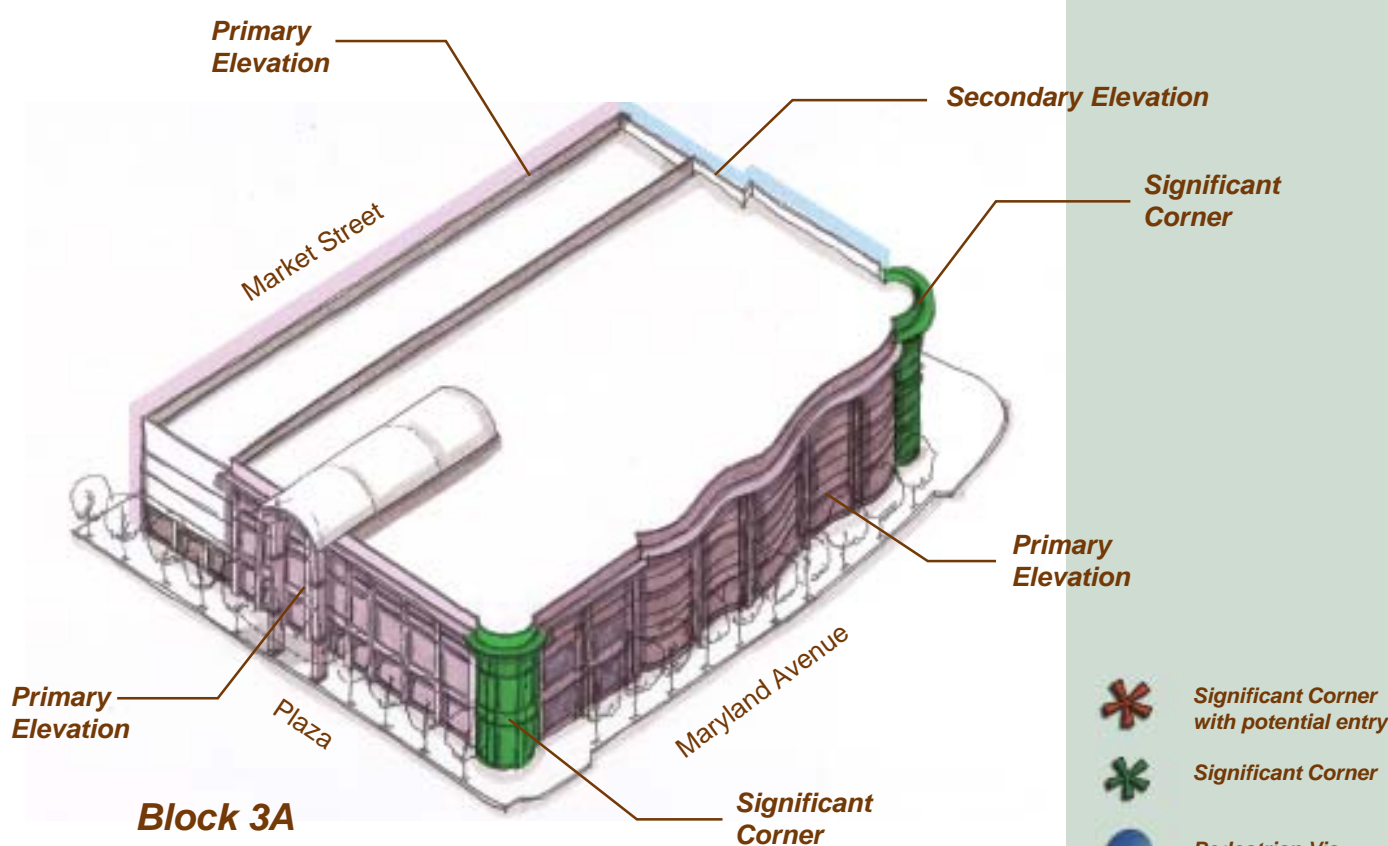
Key Elements By Block



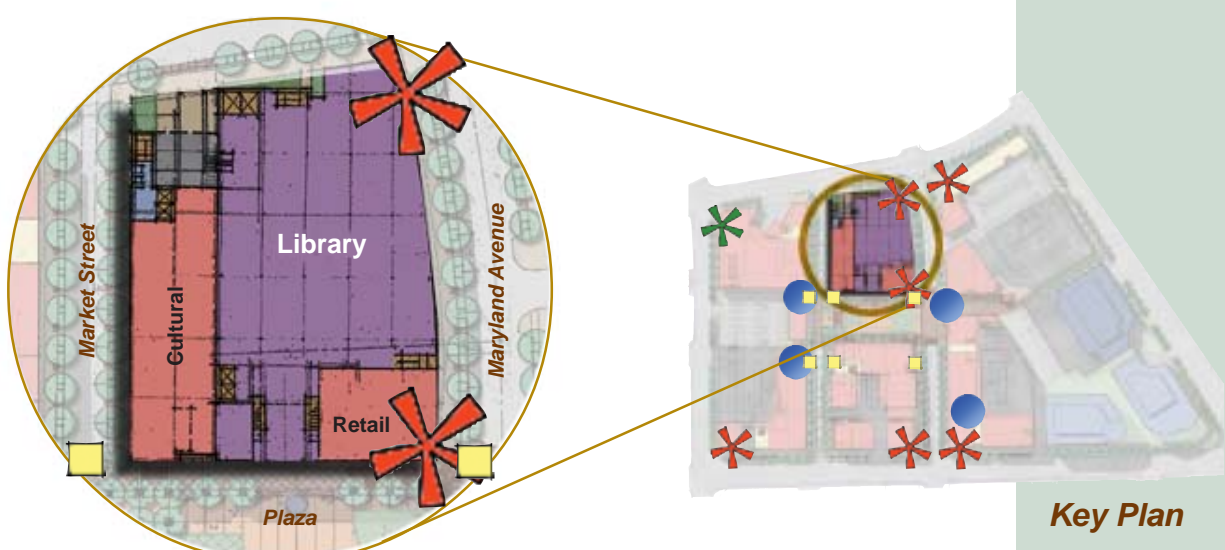
-  Significant Corner with potential entry
-  Significant Corner
-  Pedestrian Via
-  Gateway



Key Elements By Block



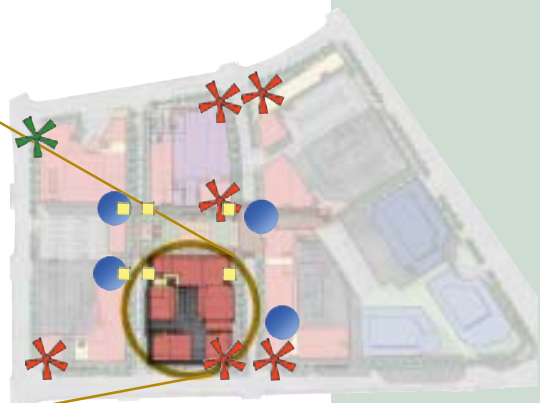
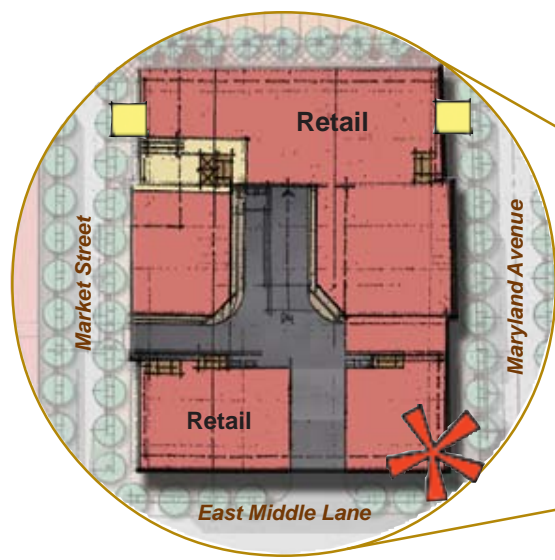
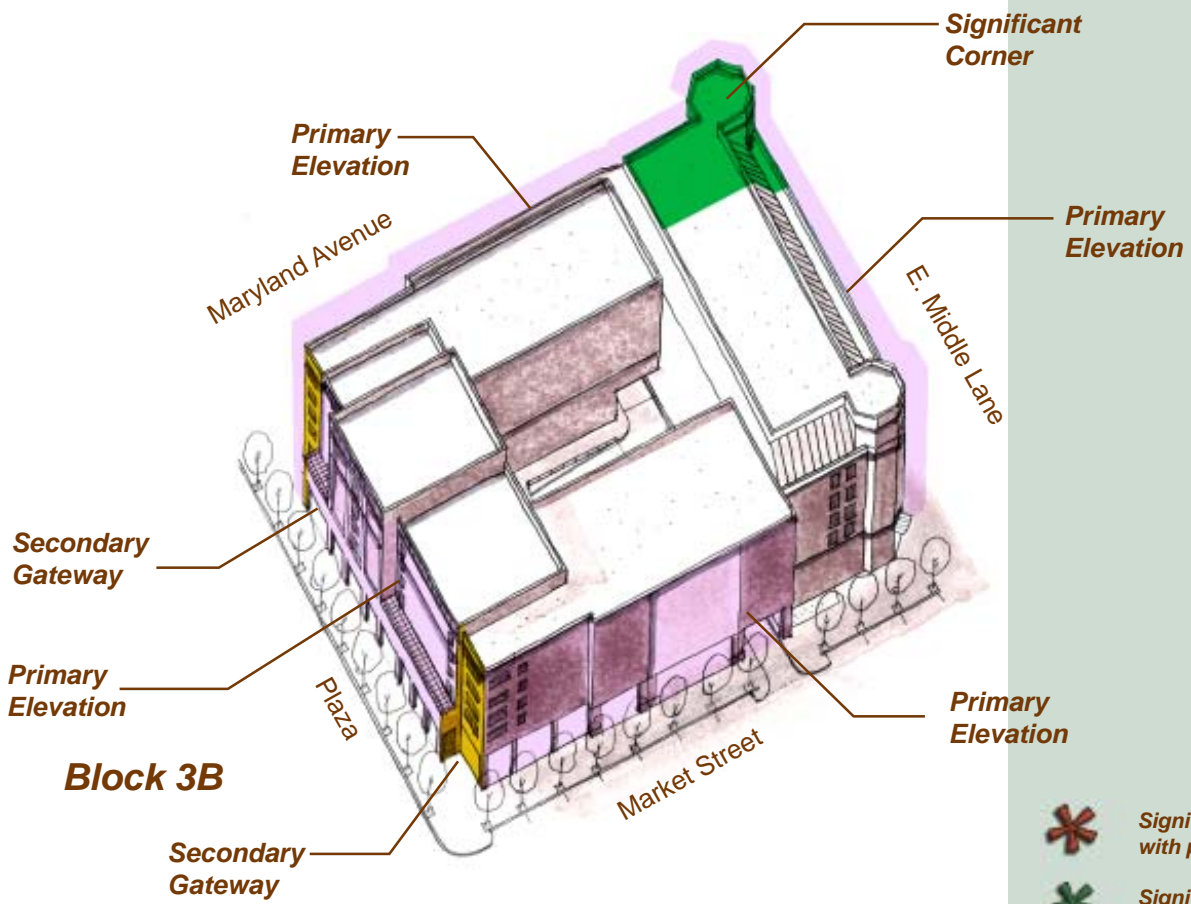
-  Significant Corner with potential entry
-  Significant Corner
-  Pedestrian Via
-  Gateway



Block 3A

Section 6.4

Key Elements By Block

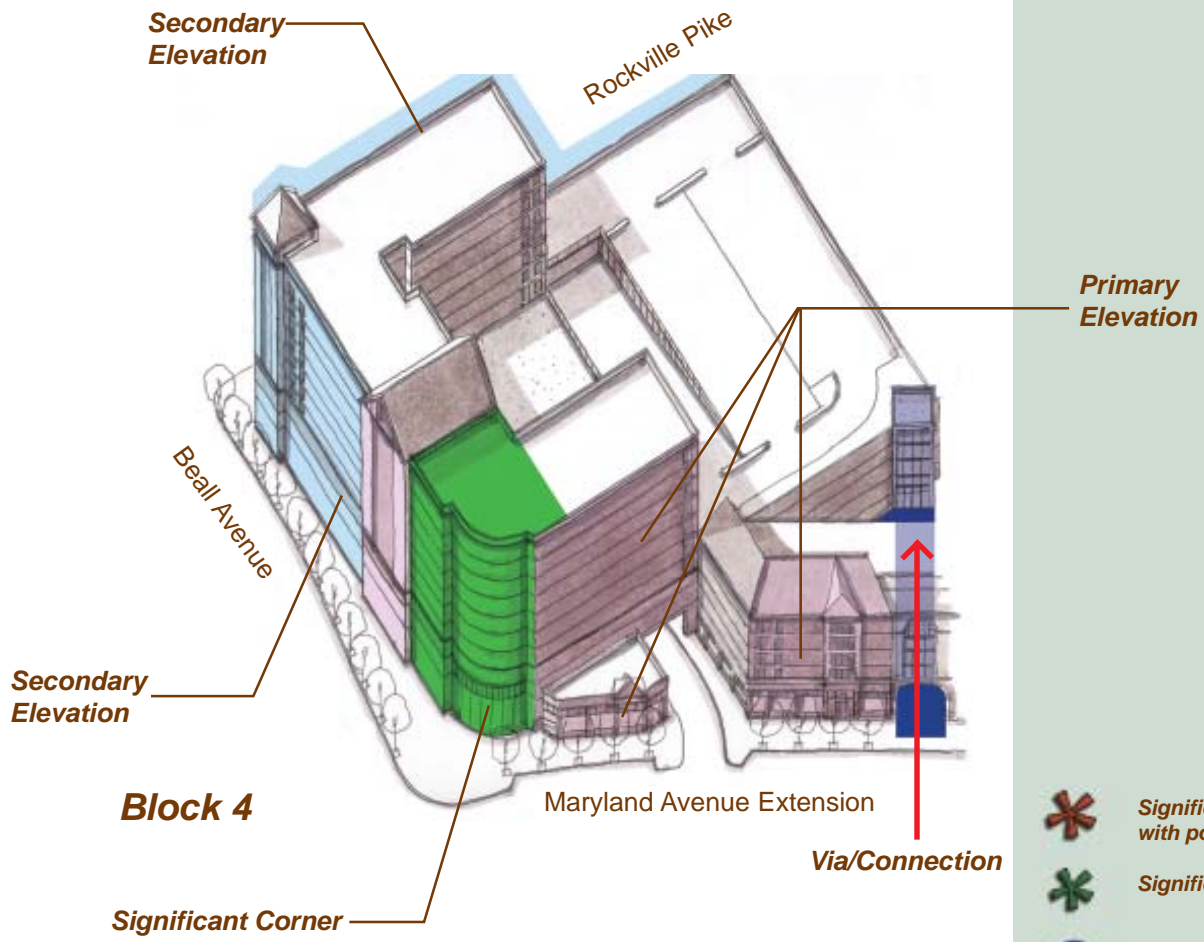


-  Significant Corner with potential entry
-  Significant Corner
-  Pedestrian Via
-  Gateway

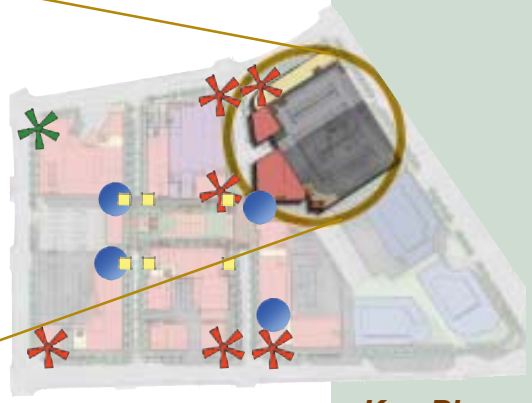
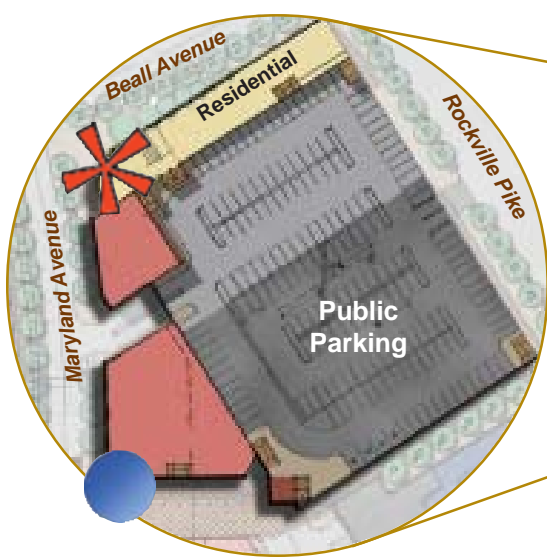
Key Plan



Key Elements By Block



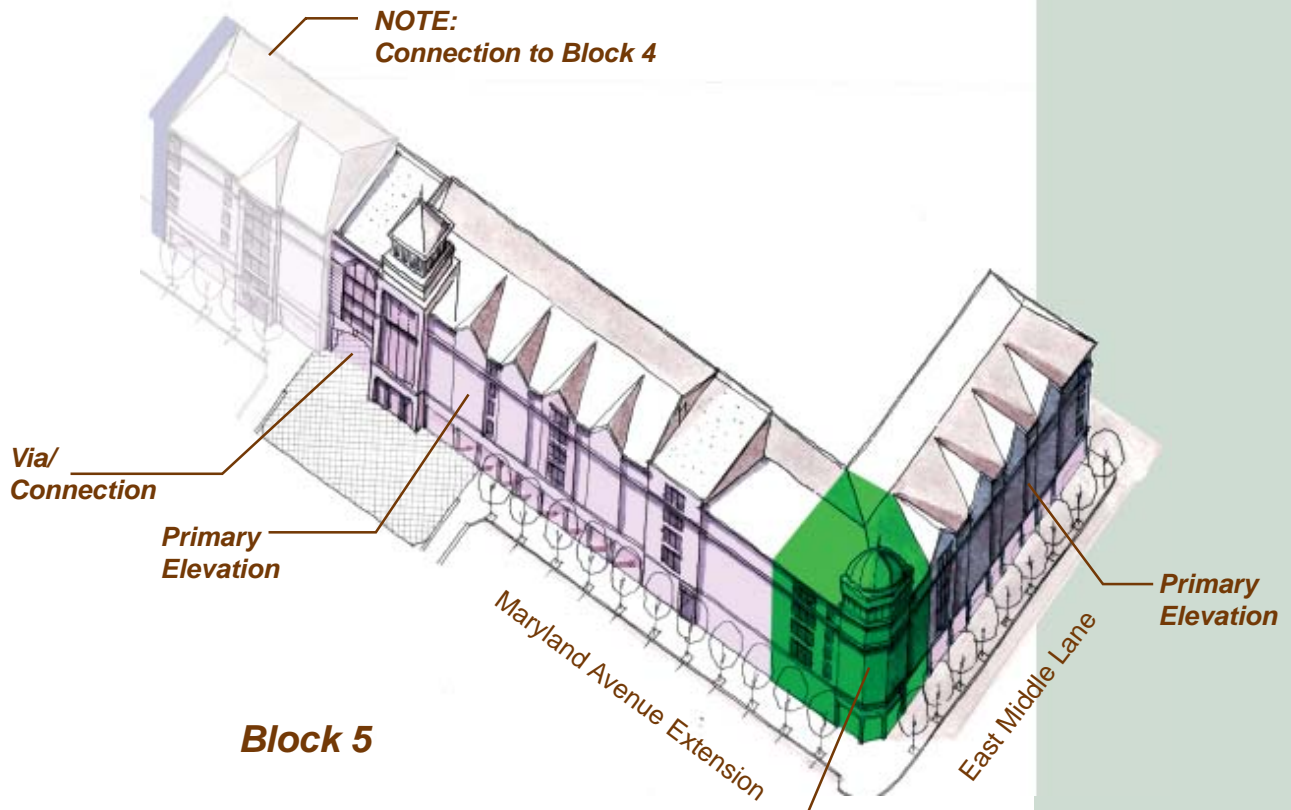
-  Significant Corner with potential entry
-  Significant Corner
-  Pedestrian Via
-  Gateway



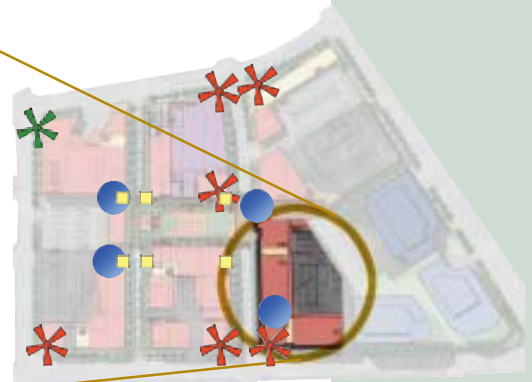
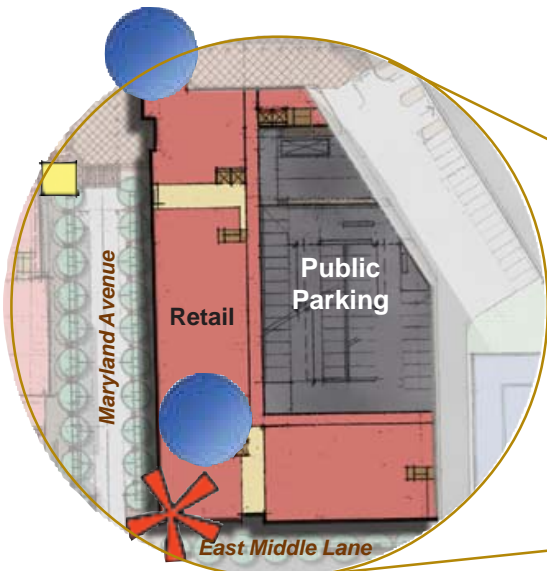
Key Plan



Key Elements By Block



-  Significant Corner with potential entry
-  Significant Corner
-  Pedestrian Via
-  Gateway



Block 5
Section 6.7