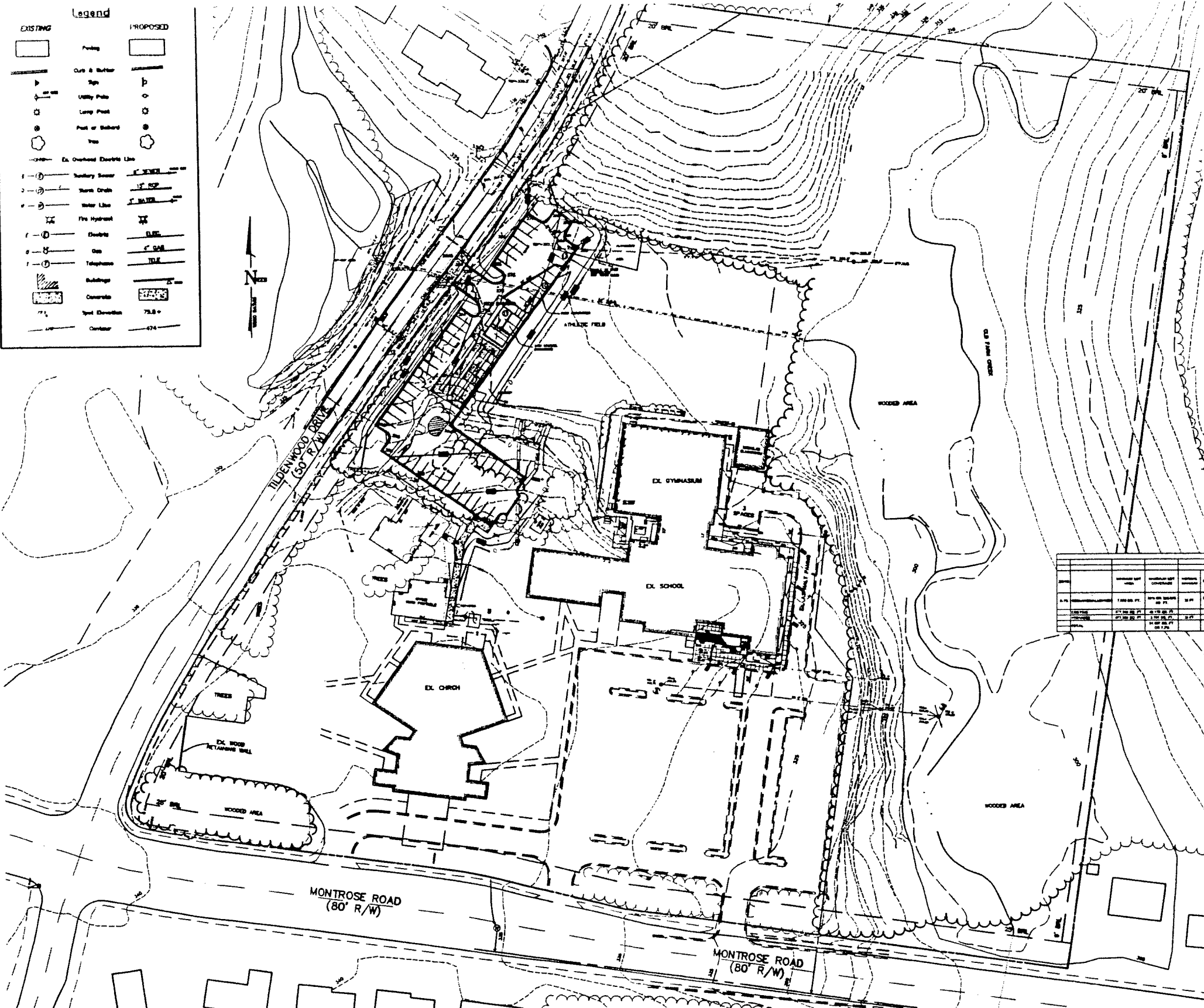


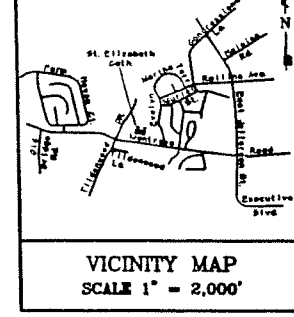
I:\88160\dwg\Up_33_01.dwg, 11x17, 4/7/2004 10:28:59 AM, crumste, COPYRIGHT ©2003 MACRIS, HENDRICKS & GLASCOCK, P.A.

Legend

EXISTING	PROPOSED



- GENERAL NOTES**
- This topography is from a field topographic survey prepared by Macris, Hendricks & Glascock, P.A. The boundary is from deeds and plots of record.
 - Notably "Miss Utility" at 1-800-257-7777 and the City of Rockville utility superintendent at 240-314-8587 48 hours prior to beginning any site disturbance.
 - Information concerning underground utilities was obtained from overhead records. The contractor must determine the exact location of existing utilities by digging test pits at all utility crossings and in advance of trenching. If clearance is less than shown on this plan, contact the office immediately.
 - Should the contractor find any discrepancies between the plan and field conditions, this office is to be notified immediately to resolve the situation. Should the contractor make field corrections or adjustments without notifying the engineer, then the contractor assumes all responsibility for these changes.



SITE DATA

SUBJECT PROPERTY: SAINT ELIZABETH'S CHURCH AND SCHOOL
MONTROSE
PART OF PARCELS "A", "B" & "C"
PLAT BOOK 79, PLAT No. 7953

OUTLOT "B"
MONTROSE
PLAT BOOK 113, PLAT 13329

NET LOT AREA: 487,386 SQUARE FEET or 11.2243 ACRES

ZONING CLASSIFICATION: R-7B, ONE FAMILY DETACHED, RESIDENTIAL

PROPERTY ADDRESS: 917 MONTROSE ROAD
ROCKVILLE, MD 20852

TAX ACCOUNT NO.: 04-0032888

SEWER SERVICE AREA CATEGORY: S-1

WATER SERVICE AREA CATEGORY: W-4

SEWER BASH: CASH, JOHN BASH

TYPE OF SEWER DISPOSAL: W-50C

TYPE OF WATER SUPPLY: W-50C

PRINCIPAL USE: CHURCH

ACCESSORY USES: EDUCATIONAL INSTITUTION PRIVATE
(DETACHED ONE-FAMILY DWELLING (FACTORY))

PREVIOUS APPLICATIONS: US488-8810
SP088-8228
AP088-8288
US888-8828
US888-8828
US888-8828
US11-88
US11-88
US11-88

OWNER: ROMAN CATHOLIC ARCHDIOCESE OF WASHINGTON A CORPORATION SOLE
917 MONTROSE ROAD
ROCKVILLE, MD 20852

APPLICANT: REVEREND JOHN F. MACFARLANE
SAINT ELIZABETH PARISH
917 MONTROSE ROAD
ROCKVILLE, MD 20852

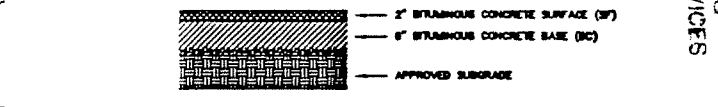
NO.	DESCRIPTION	TOTAL		EXISTING		PROPOSED	
		AREA (SQ. FT.)	PERCENT	AREA (SQ. FT.)	PERCENT	AREA (SQ. FT.)	PERCENT
1	ASPHALT DRIVEWAY	1,200	0.25%	1,200	0.25%	0	0%
2	ASPHALT DRIVEWAY	1,200	0.25%	0	0%	1,200	0.25%
3	ASPHALT DRIVEWAY	1,200	0.25%	0	0%	1,200	0.25%
4	ASPHALT DRIVEWAY	1,200	0.25%	0	0%	1,200	0.25%
5	ASPHALT DRIVEWAY	1,200	0.25%	0	0%	1,200	0.25%
6	ASPHALT DRIVEWAY	1,200	0.25%	0	0%	1,200	0.25%
7	ASPHALT DRIVEWAY	1,200	0.25%	0	0%	1,200	0.25%
8	ASPHALT DRIVEWAY	1,200	0.25%	0	0%	1,200	0.25%
9	ASPHALT DRIVEWAY	1,200	0.25%	0	0%	1,200	0.25%
10	ASPHALT DRIVEWAY	1,200	0.25%	0	0%	1,200	0.25%
11	ASPHALT DRIVEWAY	1,200	0.25%	0	0%	1,200	0.25%
12	ASPHALT DRIVEWAY	1,200	0.25%	0	0%	1,200	0.25%
13	ASPHALT DRIVEWAY	1,200	0.25%	0	0%	1,200	0.25%
14	ASPHALT DRIVEWAY	1,200	0.25%	0	0%	1,200	0.25%
15	ASPHALT DRIVEWAY	1,200	0.25%	0	0%	1,200	0.25%
16	ASPHALT DRIVEWAY	1,200	0.25%	0	0%	1,200	0.25%
17	ASPHALT DRIVEWAY	1,200	0.25%	0	0%	1,200	0.25%
18	ASPHALT DRIVEWAY	1,200	0.25%	0	0%	1,200	0.25%
19	ASPHALT DRIVEWAY	1,200	0.25%	0	0%	1,200	0.25%
20	ASPHALT DRIVEWAY	1,200	0.25%	0	0%	1,200	0.25%
21	ASPHALT DRIVEWAY	1,200	0.25%	0	0%	1,200	0.25%
22	ASPHALT DRIVEWAY	1,200	0.25%	0	0%	1,200	0.25%
23	ASPHALT DRIVEWAY	1,200	0.25%	0	0%	1,200	0.25%
24	ASPHALT DRIVEWAY	1,200	0.25%	0	0%	1,200	0.25%
25	ASPHALT DRIVEWAY	1,200	0.25%	0	0%	1,200	0.25%
26	ASPHALT DRIVEWAY	1,200	0.25%	0	0%	1,200	0.25%
27	ASPHALT DRIVEWAY	1,200	0.25%	0	0%	1,200	0.25%
28	ASPHALT DRIVEWAY	1,200	0.25%	0	0%	1,200	0.25%
29	ASPHALT DRIVEWAY	1,200	0.25%	0	0%	1,200	0.25%
30	ASPHALT DRIVEWAY	1,200	0.25%	0	0%	1,200	0.25%

PARKING, LOADING AND ACCESS REQUIREMENTS

REQUIREMENT	INCLUDED/ALLOWED	EXISTING	PROPOSED
QUANTITY OF PARKING SPACES AND SERVICE SPACES REQUIRED (S-101)			
One (1) parking space for each lot (4) person			
For vehicle loading it is required in the main building			
Theoretical 876 / 4 x 11 = 144	144 SPACES		
Excessional reduction: One (1) parking space for each lot (2) employees, including teacher and administrative			
Theoretical 22 / 2.5 = 8.8	8.8 SPACES		
TOTAL	152.8 SPACES	172 SPACES	248 SPACES

INTERNAL LANDSCAPING OF SURFACE PARKING AREAS (S-101)

REQUIREMENT	EXISTING	PROPOSED
In excess of any other landscaping in any other requirements, landscaping to be provided in the number of lot area shown in the table per parking space.		
Theoretical 248 x 2.5 = 620	620 SQ. FT.	1,148 SQ. FT.



NOTE: THE PAVING SECTION IS THE CITY OF ROCKVILLE MINIMUM THICKNESS. THE CONTRACTOR SHOULD HAVE THE SOIL TESTED AT THE TIME OF CONSTRUCTION AND HAVE A SOILS ENGINEER EVALUATE THE PAVING SECTIONS.

USE PERMIT
SAINT ELIZABETH CHURCH
MONTROSE p/o Parcels "A", "B" & "C" and Outlot "B"
Plat Book 79 Plat No. 7953 and Plat Book 113 Plat No. 13329
4TH ELECTION DISTRICT
CITY OF ROCKVILLE - MARYLAND

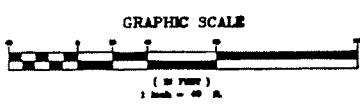
Macris, Hendricks & Glascock, P.A.
Engineers + Planners
Landscape Architects + Surveyors

1220 Wilson Road, Suite 120
Maryland Heights, Maryland
20886-1279

Phone: 301.678.0648
Fax: 301.944.0863
www.mhgc.com

Proj. No. 01/18/03
Sheet 06.190.33
1 of 1

FOR LOCATIONS OF CITY WATER AND SEWER CALL "CITY UTILITIES SUPERINTENDENT" AT 301-309-3039. FOR LOCATIONS OF OTHER UTILITIES CALL "MISS UTILITY" AT 1-800-257-7777 AT LEAST 48 HOURS BEFORE BEGINNING CONSTRUCTION



APPLICANT
SAINT ELIZABETH PARISH
917 MONTROSE ROAD
ROCKVILLE, MD 20852
CONTACT: REV. JOHN F. MACFARLANE, PASTOR
TEL: (301) 861-1380

NO.	DATE	DESCRIPTION	BY
2	02/23/04	Revised Driveway Location	SEC
1	05/23/03	Revised Project Preamble	SEC

COMMUNITY PLANNING AND DEVELOPMENT SERVICES

APR 07 20

EXHIBIT "1"



ST. ELIZABETH'S
CATHOLIC SCHOOL

PROPOSED BELL TOWER	
ZONE R75	
SETBACKS REQ'D FROM	
FRONT	25' 90'
REAR	20' 780'
SIDE	20' 550'
HEIGHT	35' 56'

ST. ELIZABETH'S
CATHOLIC CHURCH

PROPOSED BELL TOWER
(SEE DETAILED PLAN A2)

MAC. PARKING LOT
550.0' TO SIDE LOTLINE

TILDENWOOD DRIVE

MONTROSE ROAD

MONTROSE ROAD

SWM POND

PROPOSED PARKING (15 SPACES)

TO MONTROSE PARKWAY

EXHIBIT "2"

A1 (OF 3)

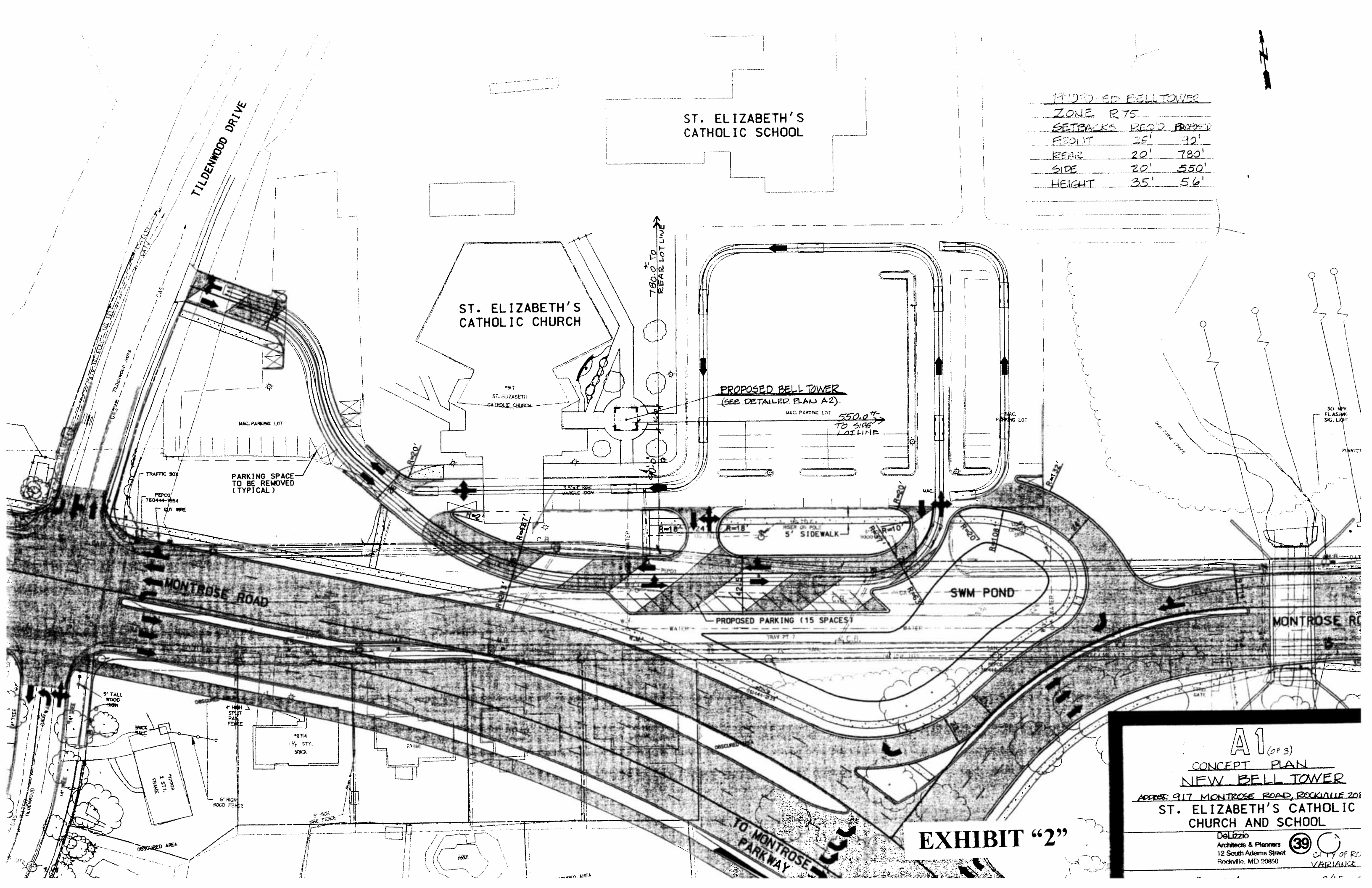
CONCEPT PLAN
NEW BELL TOWER

ADDRESS: 917 MONTROSE ROAD, ROCKVILLE 20850

ST. ELIZABETH'S CATHOLIC
CHURCH AND SCHOOL

DeLizzio
Architects & Planners
12 South Adams Street
Rockville, MD 20850

39 CITY OF ROCKVILLE
VARIANCE



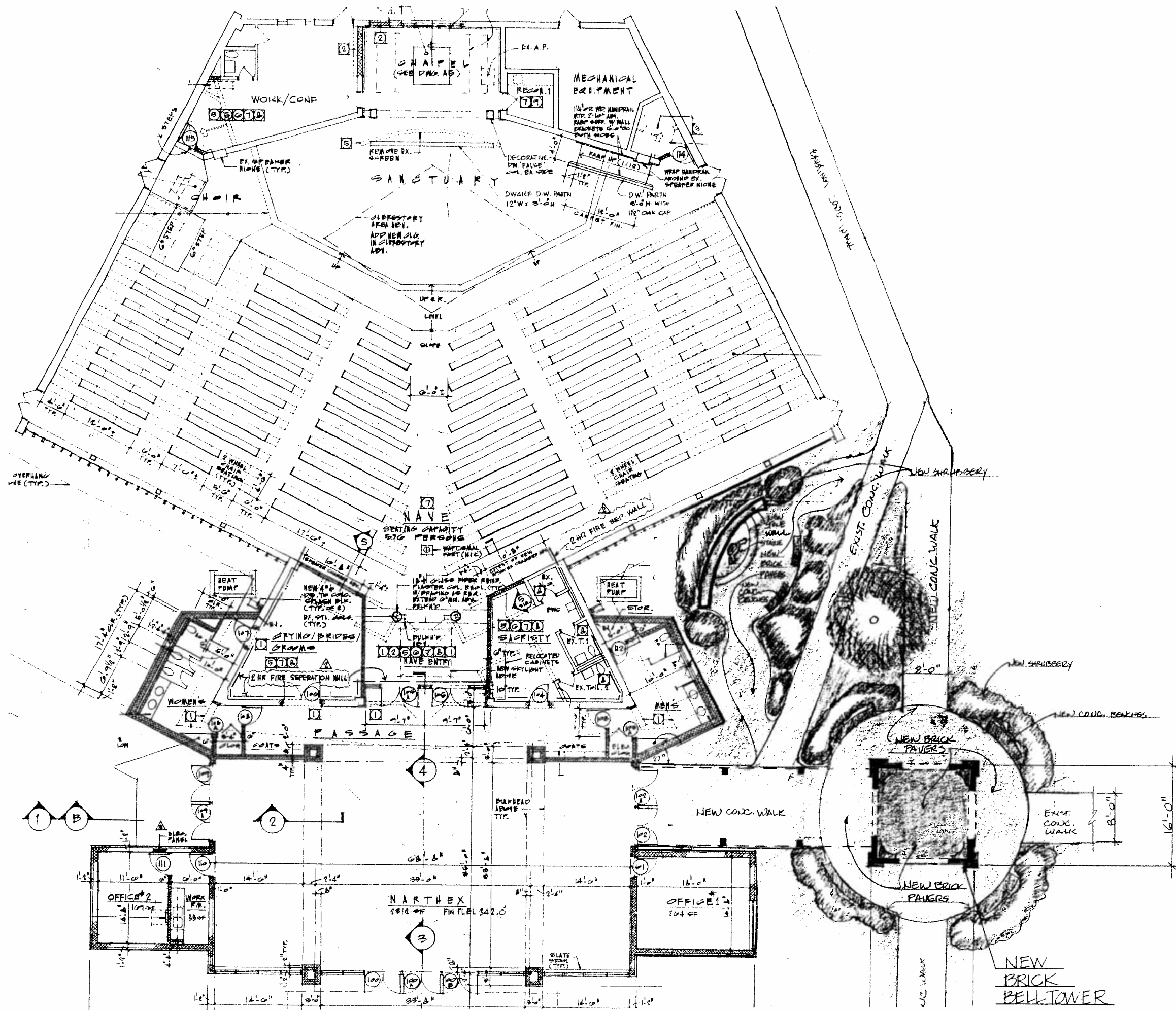
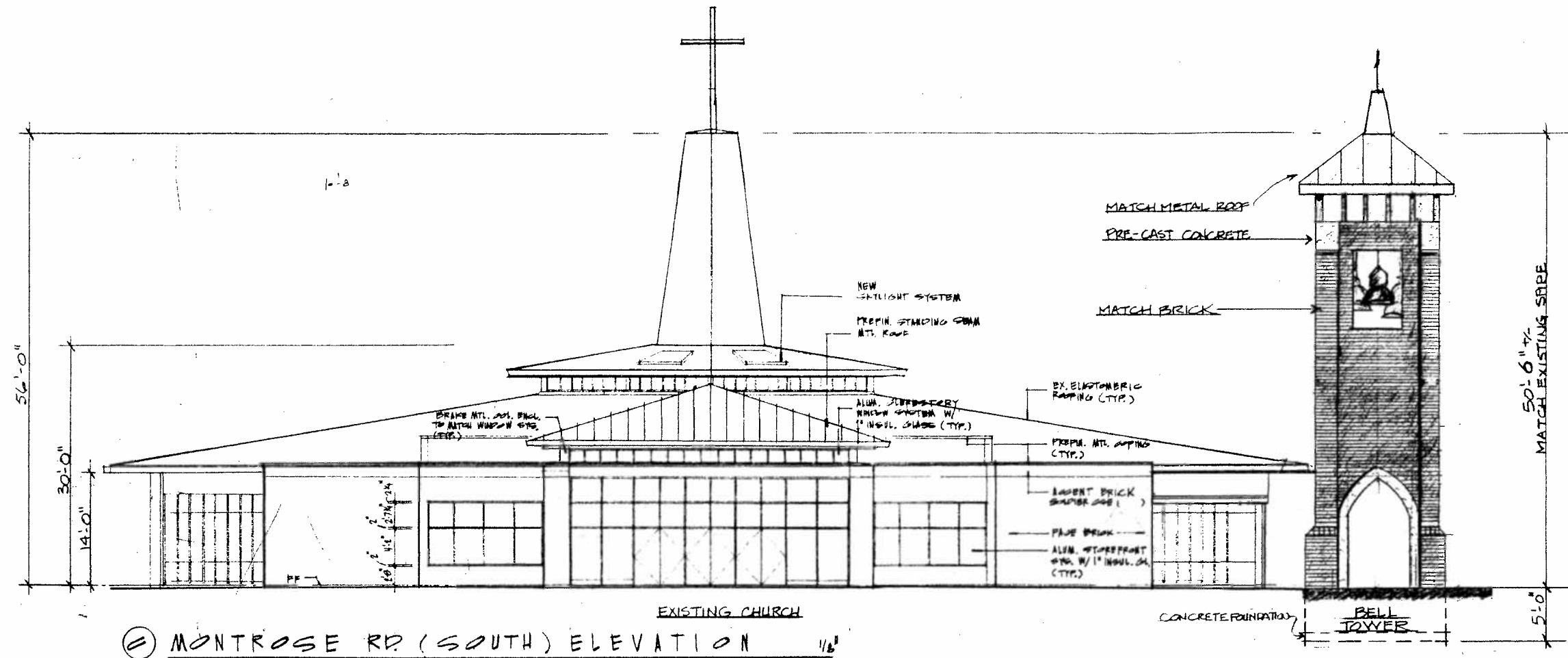


EXHIBIT "3"



⊙ MONTROSE RD. (SOUTH) ELEVATION 1/8"

EXHIBIT "4"