

Sanitary Sewer System Rehabilitation Work to Begin Week of Nov. 7

Project

Description: The City of Rockville has hired AM-Liner East, Inc., to implement sanitary sewer repairs in your neighborhood. No excavation will be necessary. The contractor will be accessing manholes and driving vehicles in the work areas indicated on the map. It will be necessary to reroute the sewer flow during the lining process. The contractor will set up leak-proof hoses and pumps to reroute the flow. You will see these hoses near the work area and you may also hear the temporary portable pumps during this process. During the work, temporary lane closures and parking restrictions may be necessary. The contractor will place notices with additional information on the front doors of affected residents 48 hours prior to the start of work.

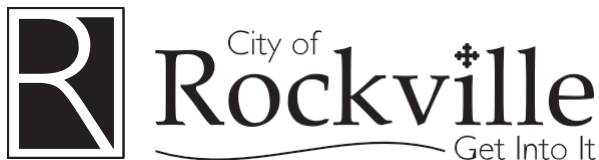
Purpose: The repairs consist of installing a liner into the sewer pipes to coat the interior of the pipes, sealing cracks and fixing pipe defects.

Location: See the reverse side of this advisory for a map.

Timeline: Each sewer segment will take approximately one day to complete. The work will be completed the week of Nov. 7.

Contact: Jim Woods, City of Rockville Project Manager,
240-314-8521, jwoods@rockvillemd.gov

Greg Middleton, Construction Inspector,
240-314-8547, gmiddleton@rockvillemd.gov





Department of Public Works
 Engineering Division
 111 Maryland Avenue • Rockville, Maryland 20850-2364
 Phone 240.314.8500 • Fax 240.314.8539

Sewer Lining

Week of November 7

DISCLAIMER:
 This drawing is intended to be used for reference and illustrative purposes only. This drawing is not a legally recorded plan, survey, or engineering schematic and it is not intended to be used as such. This drawing is a compilation of records, information and data developed and maintained in various City offices. Map layers were created from different sources at different scales, and the actual or relative geographic position of any feature is only as accurate as the source information.

DATE: 10/18/2011 AUTHOR: aoldham



Department of Public Works
Engineering Division
 111 Maryland Avenue • Rockville, Maryland 20850-2364
 Phone 240.314.8500 • Fax 240.314.8539

Sewer Lining

Week of November 7

DISCLAIMER:
 This drawing is intended to be used for reference and illustrative purposes only. This drawing is not a legally recorded plan, survey, or engineering schematic and it is not intended to be used as such. This drawing is a compilation of records, information and data developed and maintained in various City offices. Map layers were created from different sources at different scales, and the actual or relative geographic position of any feature is only as accurate as the source information.

DATE: 10/18/2011	AUTHOR: aoldham
------------------	-----------------

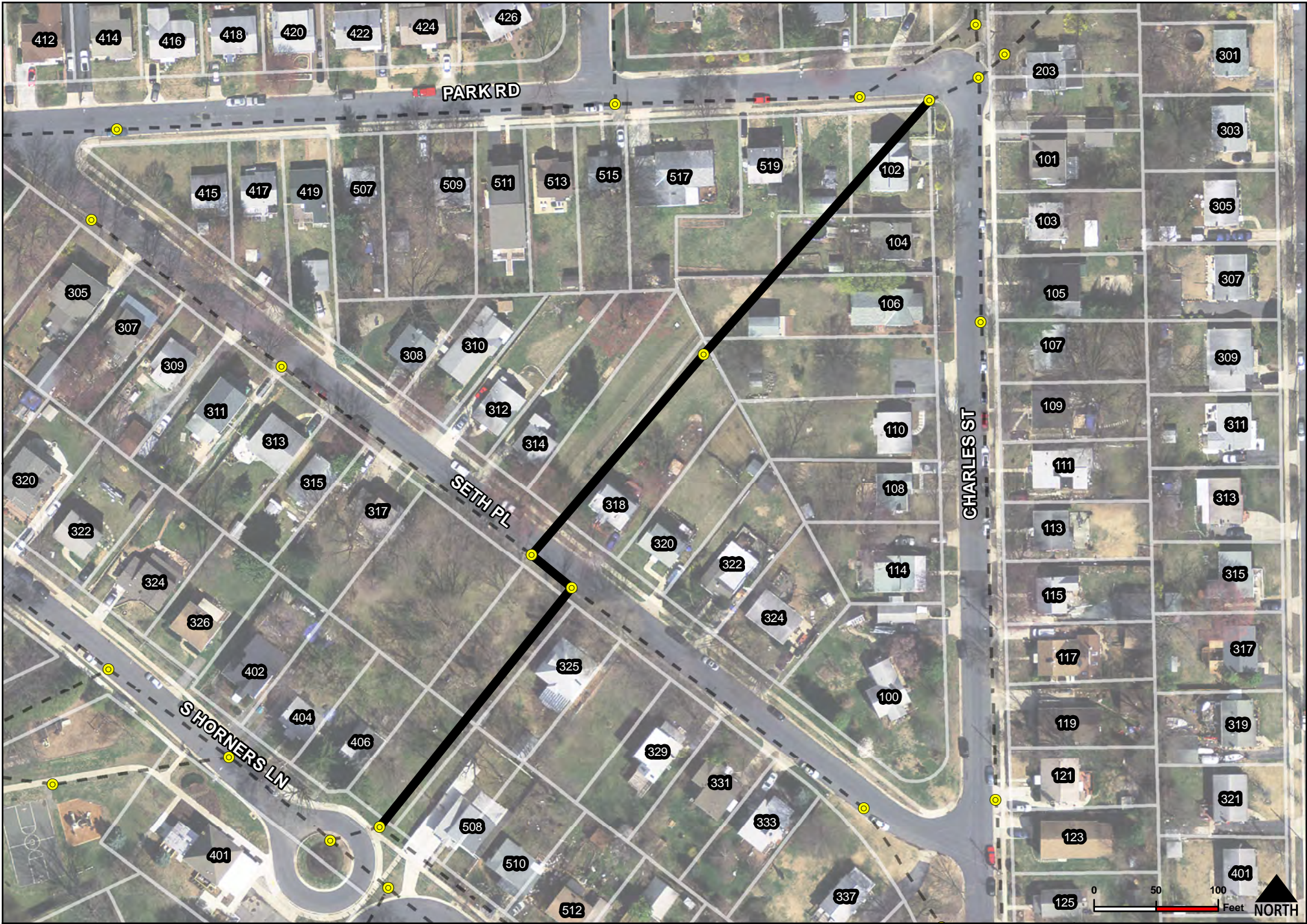


Department of Public Works
Engineering Division
 111 Maryland Avenue • Rockville, Maryland 20850-2364
 Phone 240.314.8500 • Fax 240.314.8539

Sewer Lining
Week of November 7

DISCLAIMER:
 This drawing is intended to be used for reference and illustrative purposes only. This drawing is not a legally recorded plan, survey, or engineering schematic and it is not intended to be used as such. This drawing is a compilation of records, information and data developed and maintained in various City offices. Map layers were created from different sources at different scales, and the actual or relative geographic position of any feature is only as accurate as the source information.

DATE: 10/18/2011	AUTHOR: aoldham
------------------	-----------------



Department of Public Works
Engineering Division
 111 Maryland Avenue • Rockville, Maryland 20850-2364
 Phone 240.314.8500 • Fax 240.314.8539

Sewer Lining

Week of November 7

DISCLAIMER:
 This drawing is intended to be used for reference and illustrative purposes only. This drawing is not a legally recorded plan, survey, or engineering schematic and it is not intended to be used as such. This drawing is a compilation of records, information and data developed and maintained in various City offices. Map layers were created from different sources at different scales, and the actual or relative geographic position of any feature is only as accurate as the source information.

DATE: 10/18/2011 AUTHOR: aoldham