

Dawson Farmhouses Historic District

1070/1080 Copperstone Ct. & 312 Ritchie Pkwy



1070 Cooperstone Ct

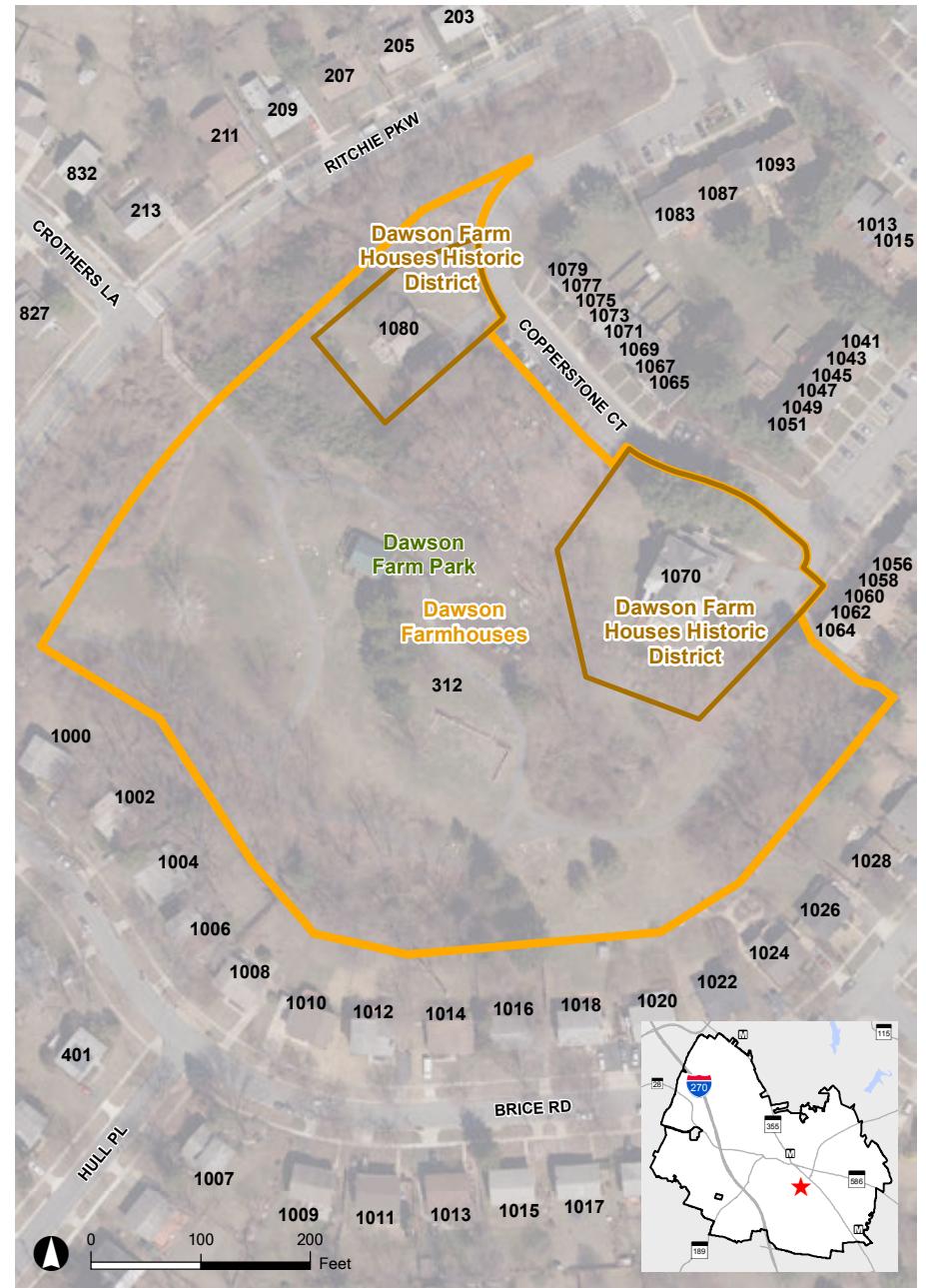


1080 Cooperstone Ct






312 Ritchie Pkwy

These two homes represent four generations of Dawsons who worked their farm, known as "Rocky Glen". The farm was purchased in 1840 and, at its greatest extent, the Dawsons farmed 500 acres. The Victorian Gothic Revival style frame house with its steep center gable was built in 1874. The second farmhouse, clad in stucco, is a Craftsman style house that was built with the growing prosperity of the Dawson Farm in 1912. The adjacent parkland (and National Register site) was part of this farm, and included outbuildings such as a bank barn and granary.



2014 Aerial

-  Rockville Historic District
-  Site Location
-  National Register Site

