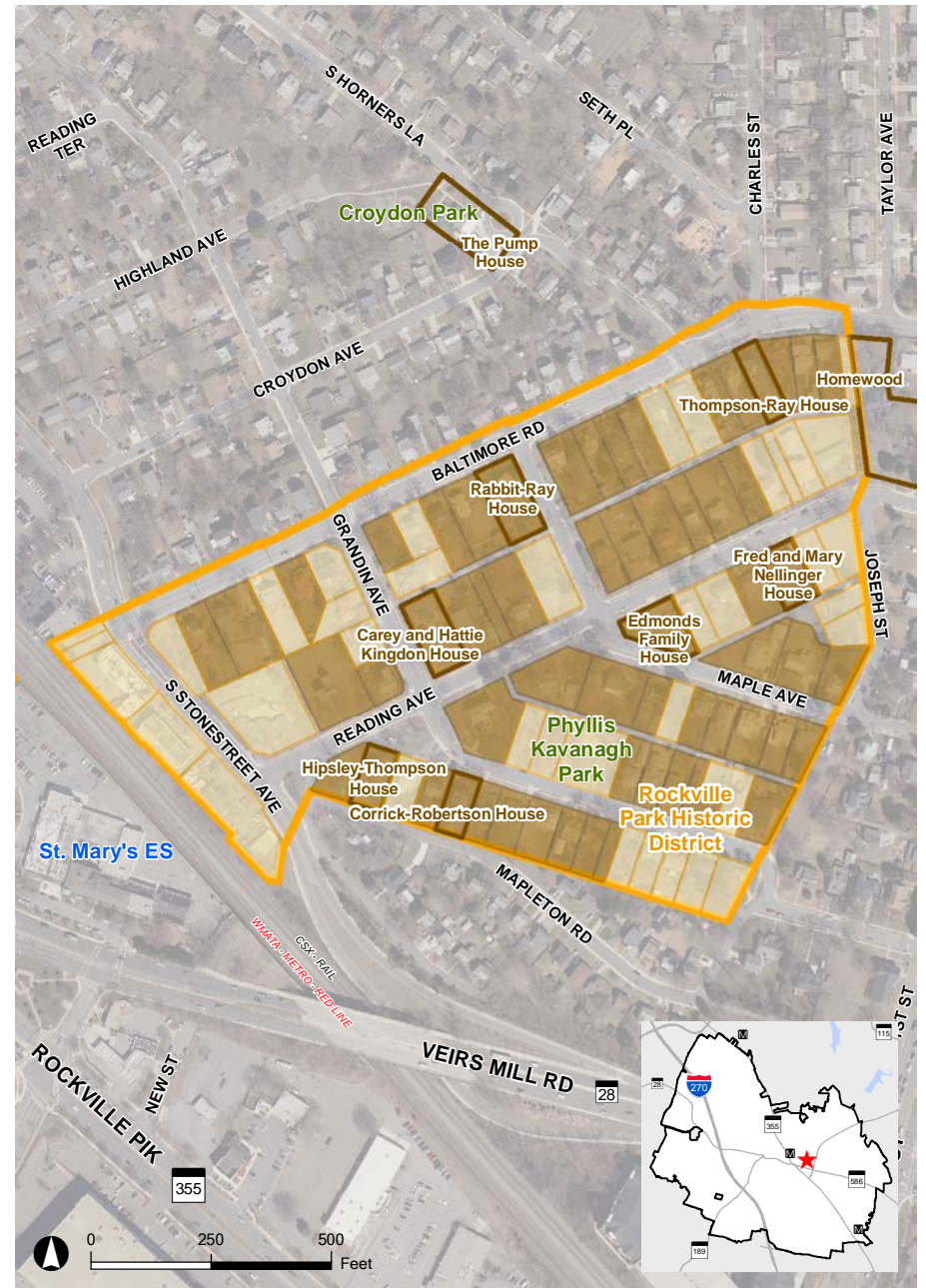


Rockville Park Historic District



The Rockville Park subdivision is recognized for its historic significance as the first residential subdivision platted east of, and adjacent to, the B&O Railroad Station. Platted in 1884, this early subdivision is notable for its open landscape, angled streets, and variety of homes that line the streets. Due to its slow development over time, Rockville Park provides an opportunity to survey American architecture from the Victorian era to the Minimal Traditional houses of the 1950s, including American Foursquares and Bungalows. The National Register Historic District includes contributing and non-contributing buildings, as well as some properties designated as local Rockville Historic Districts. Contributing buildings may be eligible for State and Federal historic tax credits.



2014 Aerial

