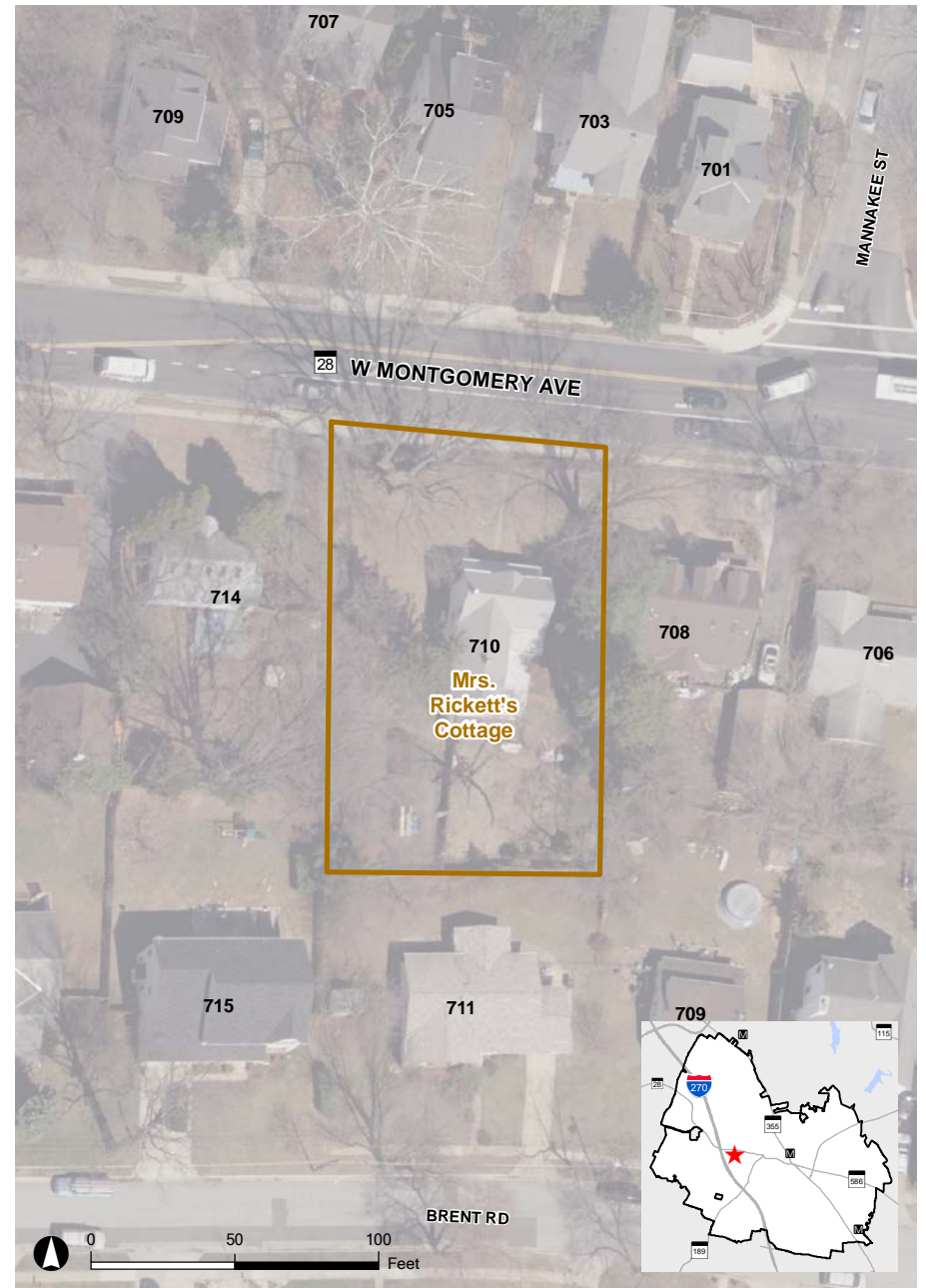


Mrs. Rickett's Cottage

710 West Montgomery Avenue



Mrs. Ricketts' West End Cottage is an "I" House, a center hall 3-bay frame house with a steep gable dormer on the front facade. There is a blind fan light in this front gable. The house is shown on the 1890 plat of the West End Park subdivision and is a good example of the small country homes that were built in Rockville at the turn of the century. At the time of designation, the Tulip Tree (Yellow Poplar) in the front yard was featured as a Montgomery Champion.



2014 Aerial

 Rockville Historic District  Site Location