

Rockville Heights Historic District

Fleet Street and Maryland Avenue



150 Maryland Avenue



101 Fleet Street



103 Fleet Street



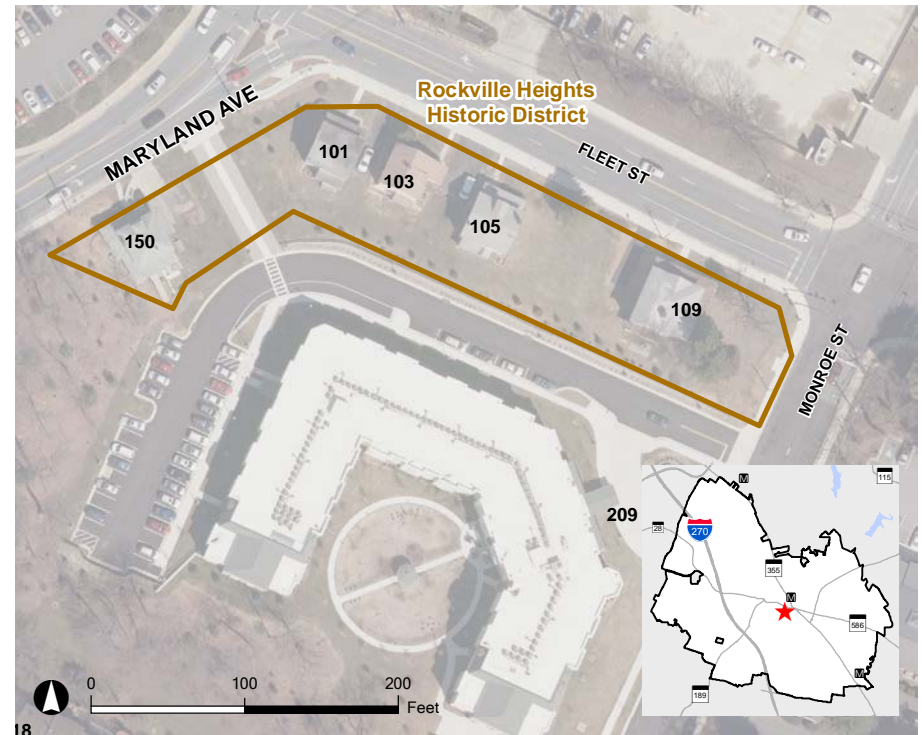
105 Fleet Street



109 Fleet Street

The Rockville Heights Historic District is located at the northern end of the Rockville Heights subdivision, platted in 1890. The high-style Georgian house at 107 Fleet Street was

built by local architect Thomas C. Groomes in 1904 and was occupied by local attorney Clifford Robertson and his family for 65 years. The other four houses were built between 1926 and 1936 for Robert C. Warfield, the only dentist in Rockville for many years. Together these houses represent an early 20th century streetscape and illustrate period architectural styles. Their front porches and traditional double-sash windows on all elevations allowed for summer comfort, having been built before air conditioning was commonly available or affordable.



Rockville Historic District ★ Site Location

2014 Aerial