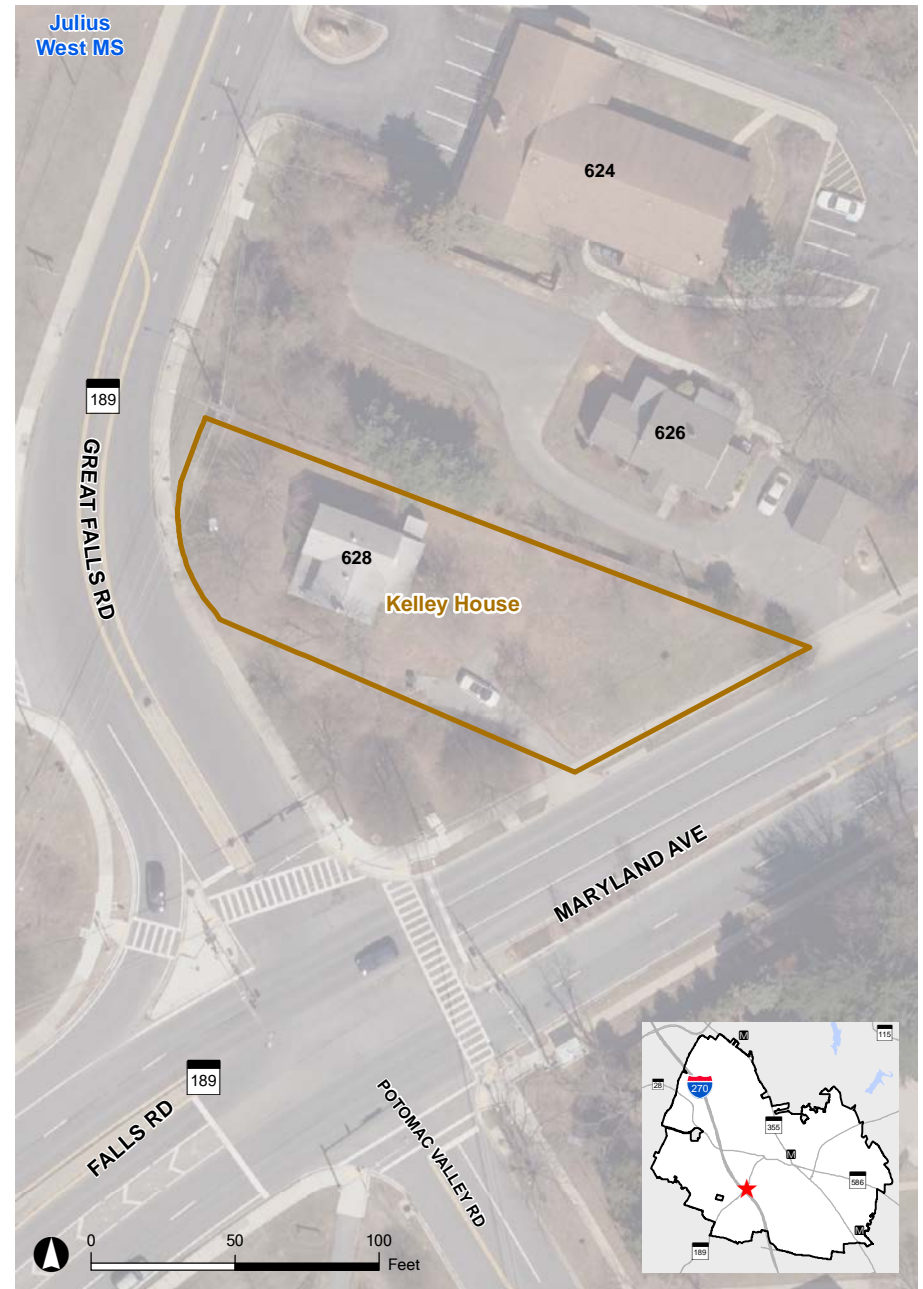


# Kelley House

628 Great Falls Road



This Gable-Front-and-Wing house was built in 1925. It has a pebbledash stucco finish and 6/1 wood windows. It is named for the Kelley family, who lived here from 1940-2008. The property has significance as a good example of this early 20th century residential building type; and, as a good example of the early 20th century suburban development of the City, as farmland surrounding Rockville was sold for residential development.



2014 Aerial

 Rockville Historic District  Site Location

