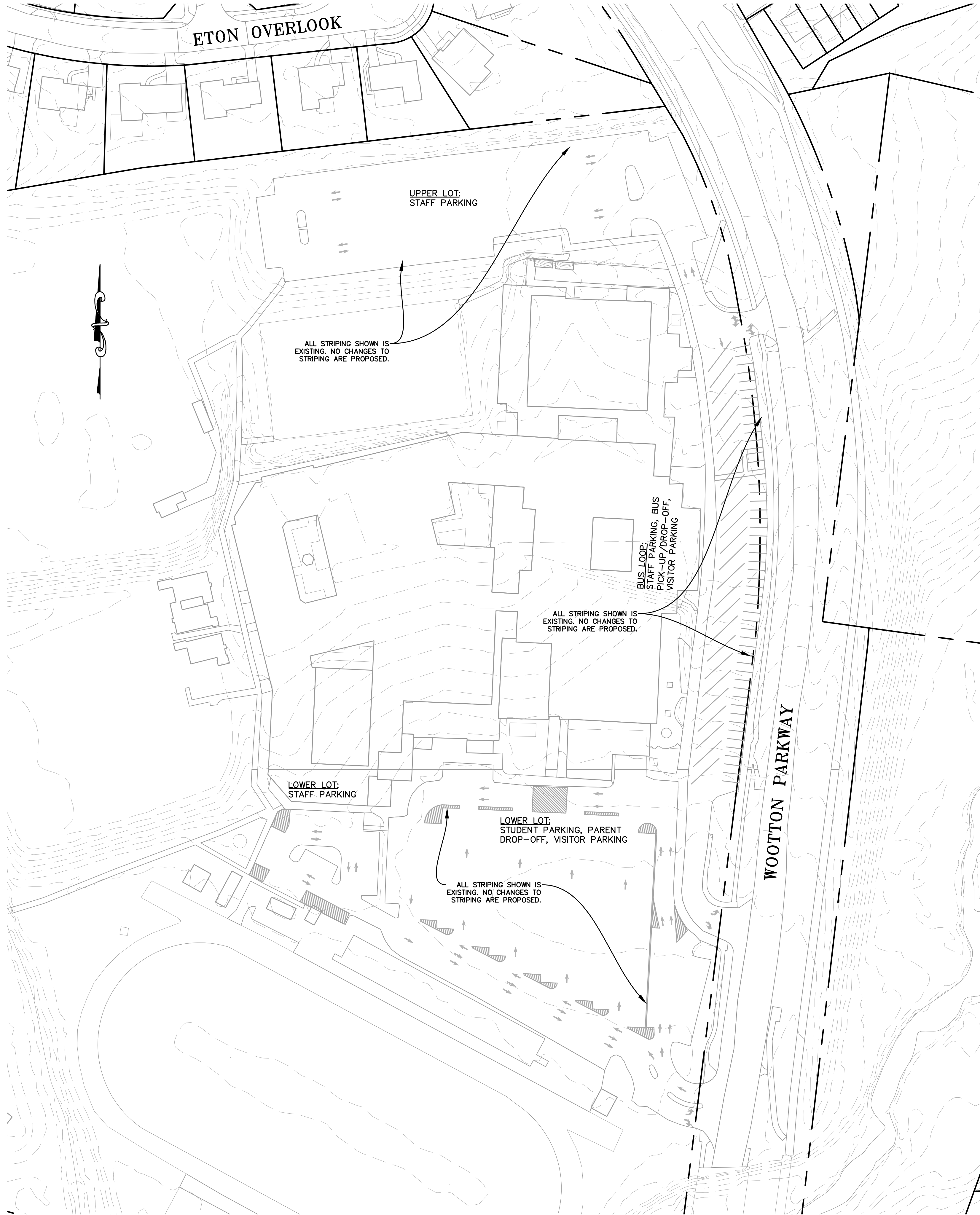
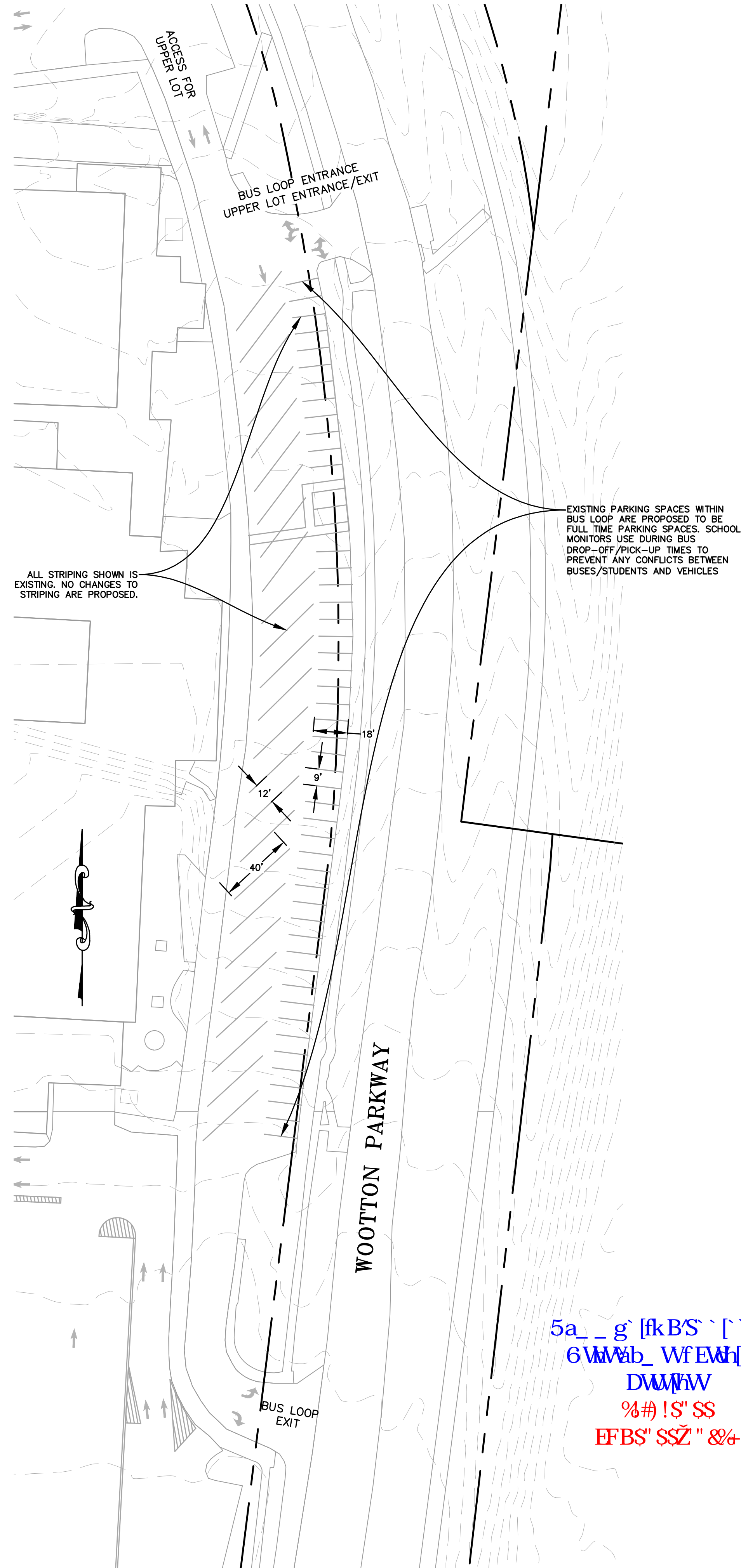


J:\200-102 - Wootton HS Permit1- Revision\CAD\DWG\Base Files\Wootton HS - topo.pjs.dwg, 2/21/2022, 2:07 PM



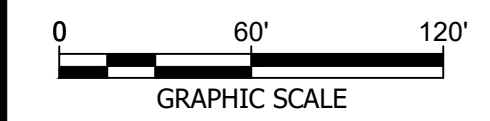
1 OVERALL PARKING AND CIRCULATION PLAN
SCALE: 1"=60'



2 BUS LOOP PARKING AND CIRCULATION PLAN
SCALE: 1"=40'

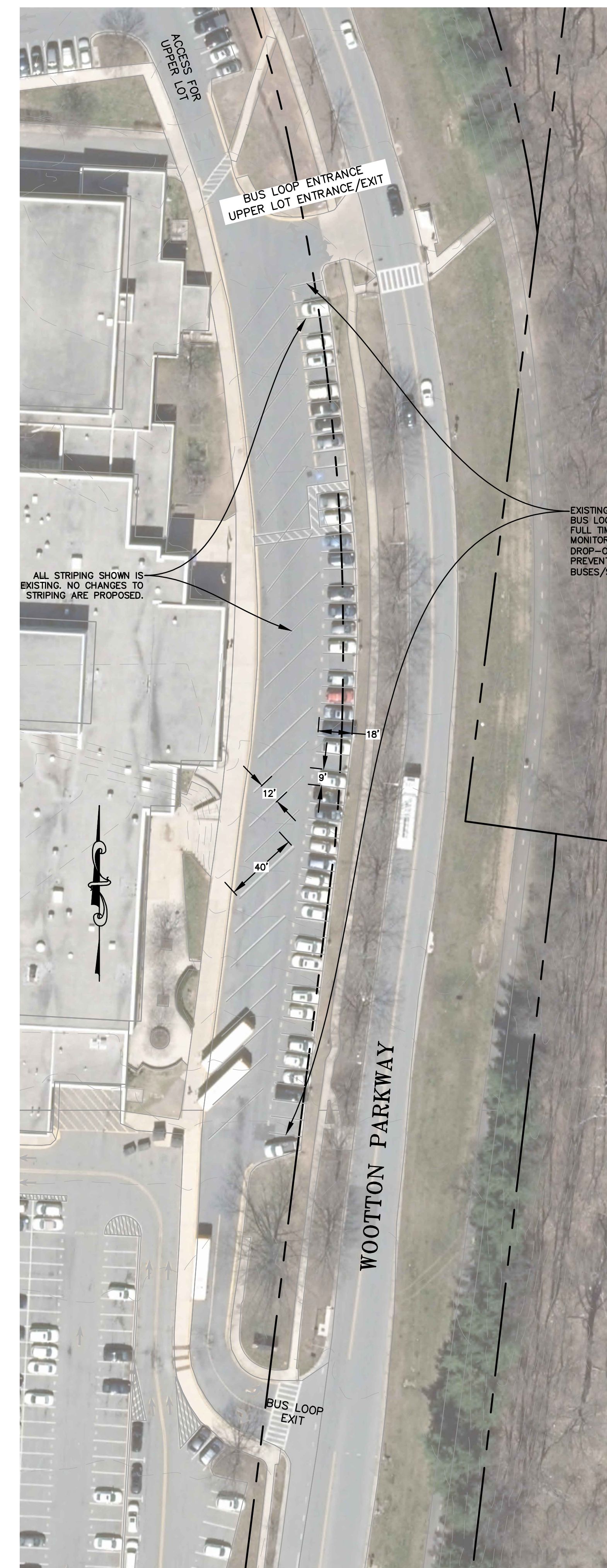
THOMAS S. WOOTTON HIGH SCHOOL
SITE PLAN AMENDMENT - PARKING REVISIONS
2100 WOOTTON PARKWAY
ROCKVILLE, MD 20850

NO.	DATE	DESCRIPTION



DATE:	FEBRUARY 2022
CAA PROJECT NO.:	200.102
DRAWN BY:	SL
CHECKED BY:	JA
SHEET TITLE	

**SITE PLAN
AMENDMENT**



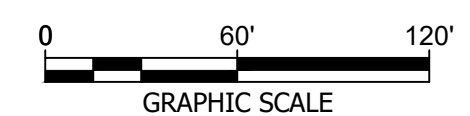
PROFESSIONAL CERTIFICATION:
I CERTIFY THAT THESE DOCUMENTS WERE PREPARED
OR APPROVED BY ME, AND THAT I AM A DULY
LICENSED PROFESSIONAL ENGINEER UNDER THE
LAWS OF THE STATE OF MARYLAND.

LICENSE NO. 31168

EXPIRATION DATE: 01/12/2023

THOMAS S. WOOTTON HIGH SCHOOL
SITE PLAN AMENDMENT - PARKING REVISIONS

2100 WOOTTON PARKWAY
ROCKVILLE, MD 20850

[illegible]

DATE:	FEBRUARY 2022
CAA PROJECT NO.:	200.102
DRAWN BY:	SL
CHECKED BY:	JA
SHEET TITLE	

SITE PLAN AMENDMENT (AERIAL)

SHEET

C-101

Community
Planning and
Development
Services
Received
3/17/2022
STP2022-00439