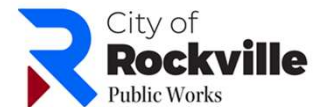




Senior Center Entrance Project

Public Meeting – Pre-Construction
May 12, 2026





Meeting Agenda

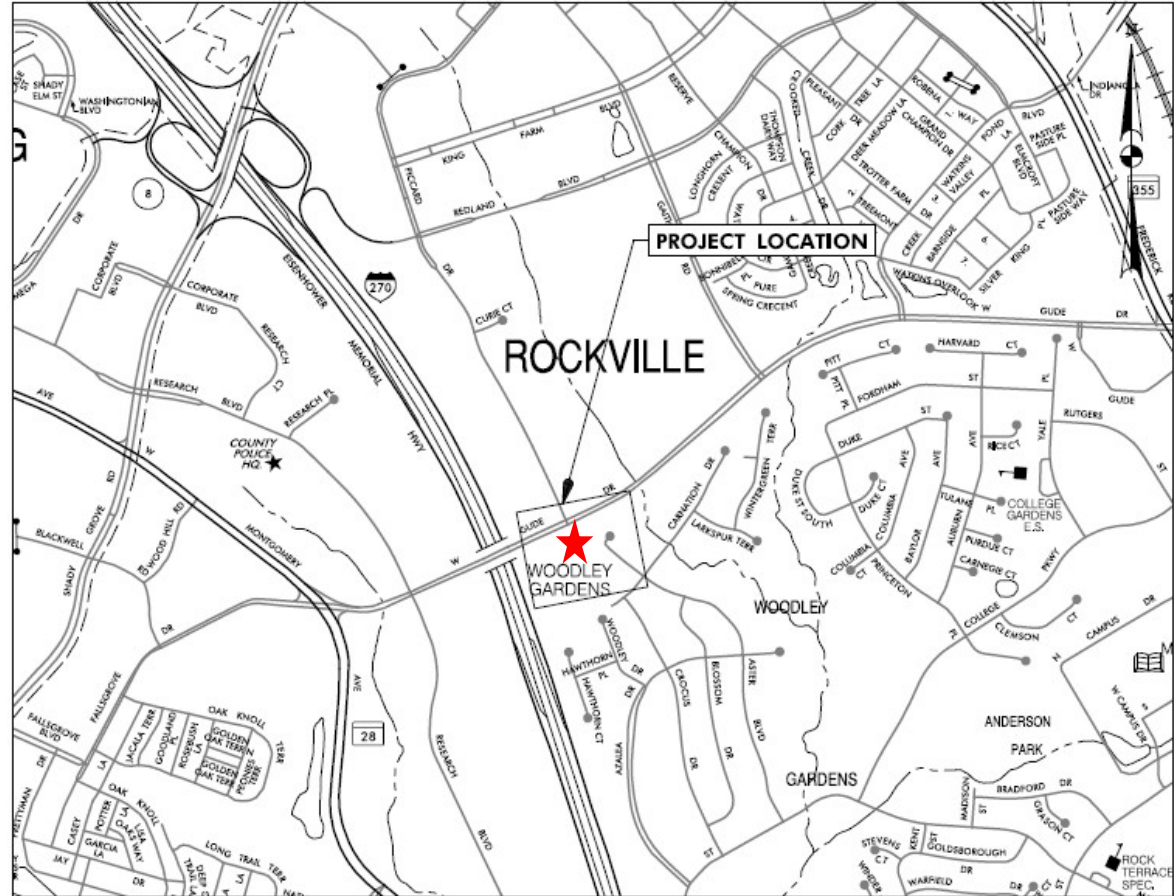


- Project Purpose and Intended Goals
- Key Project Components
- Next Steps and Anticipated Schedule
- Questions



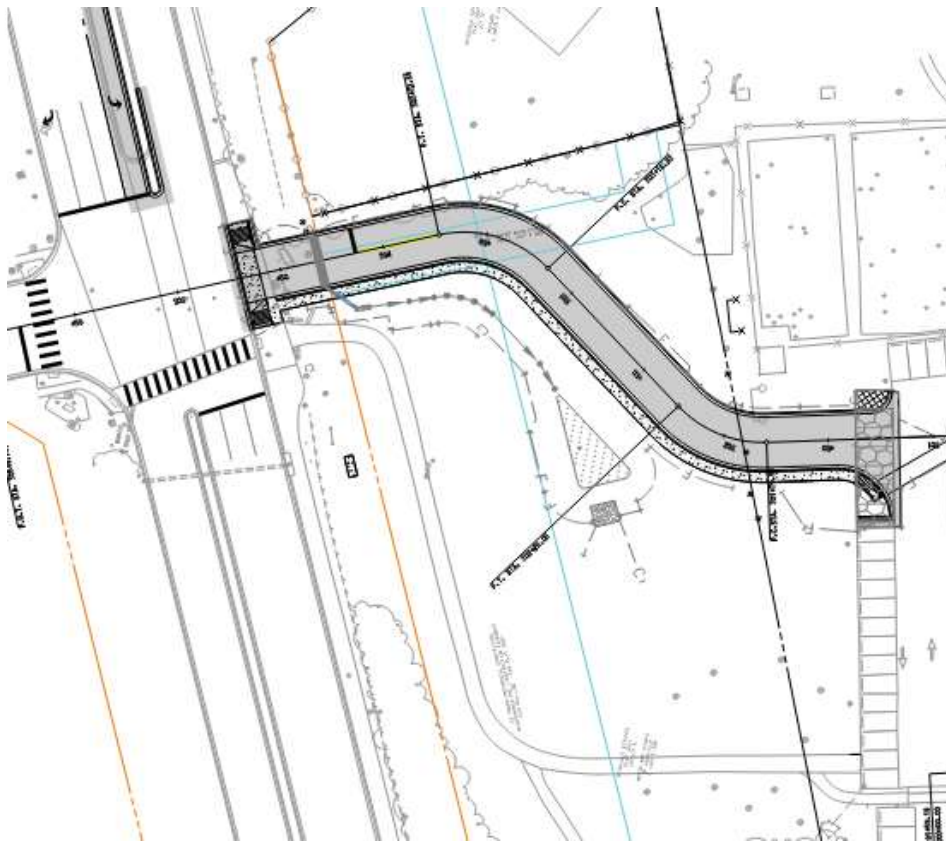
Project Purpose and Intended Goals

- Provide a more convenient access point for patrons coming from north of West Gude Drive and west of I-270.
- Provide better emergency vehicle access.
- Reduce traffic through Woodley Gardens and College Gardens.





Key Project Components - Entrance Alignment

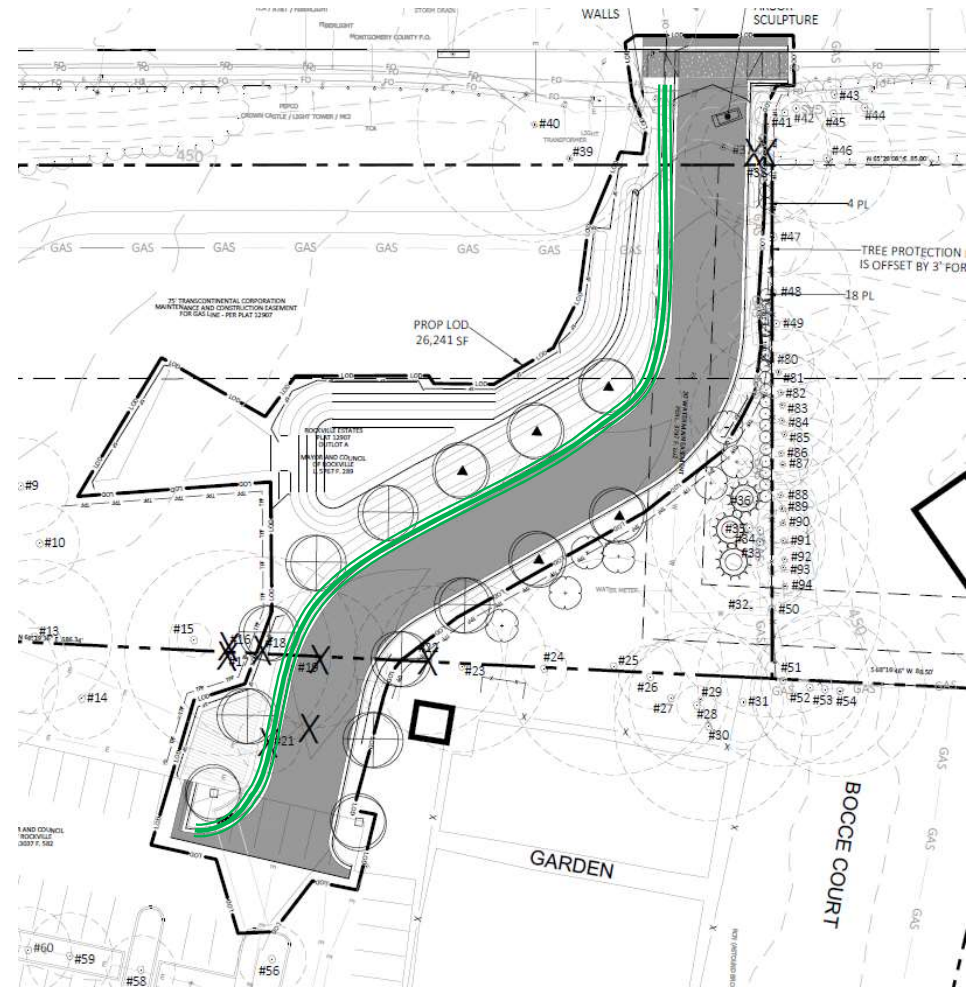


- Approximately 350 foot long driveway.
- Driveway apron aligned at the intersection of Piccard Drive and W. Gude Drive with connection into the NE corner of the parking lot.
- 2 – 12 foot lanes plus curb and gutter.



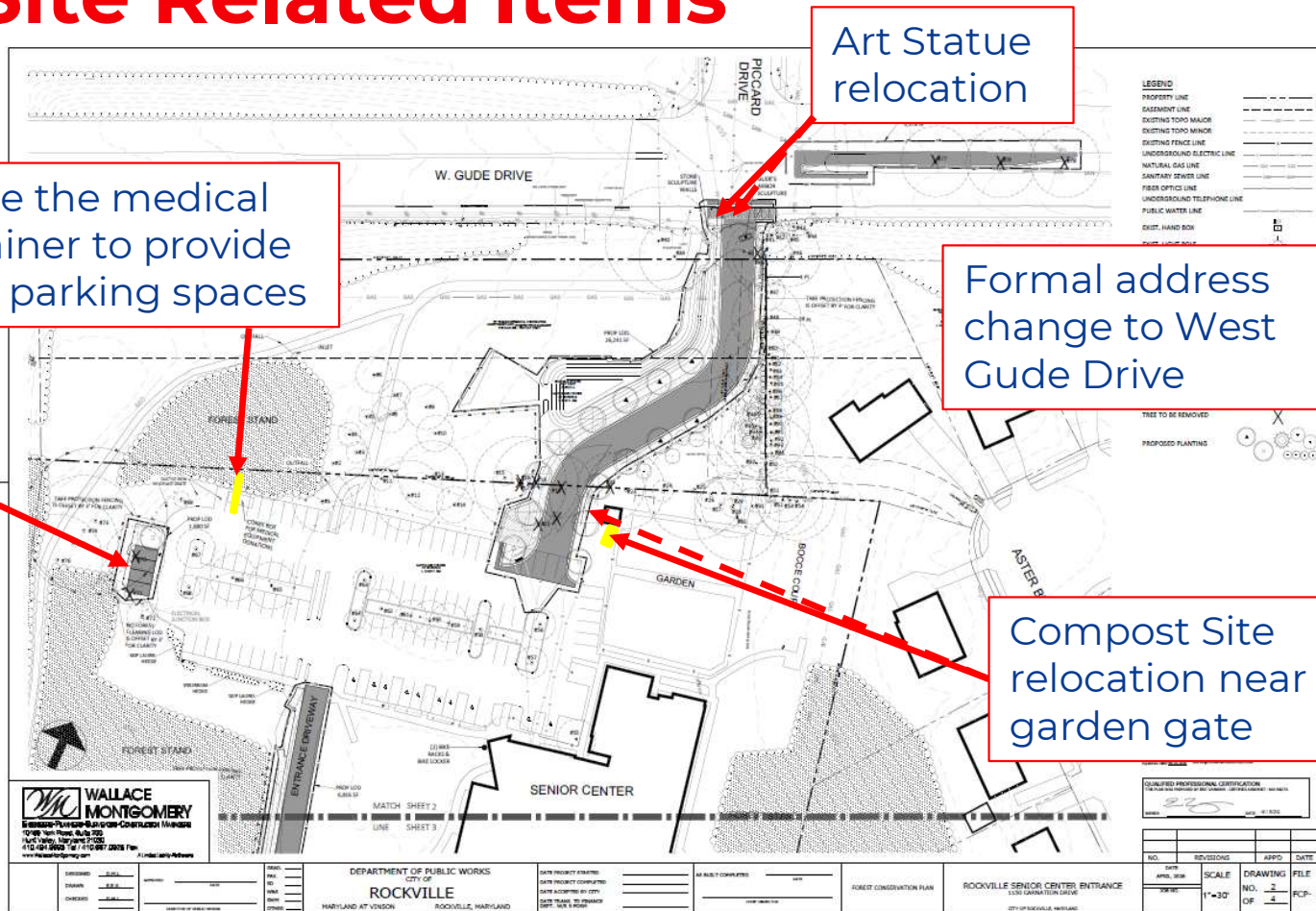
Key Project Components - Roadside Features

- 5-foot wide sidewalk on the west side of the driveway, extending from the Carl Henn Millennium Trail to the Senior Center parking lot.
- Landscape plantings on both sides of the new entrance driveway and along the fence separating the site from residential properties.
- Micro-bioretentation area on the west side of the driveway for stormwater runoff.
- Two lights proposed, one at each curve.





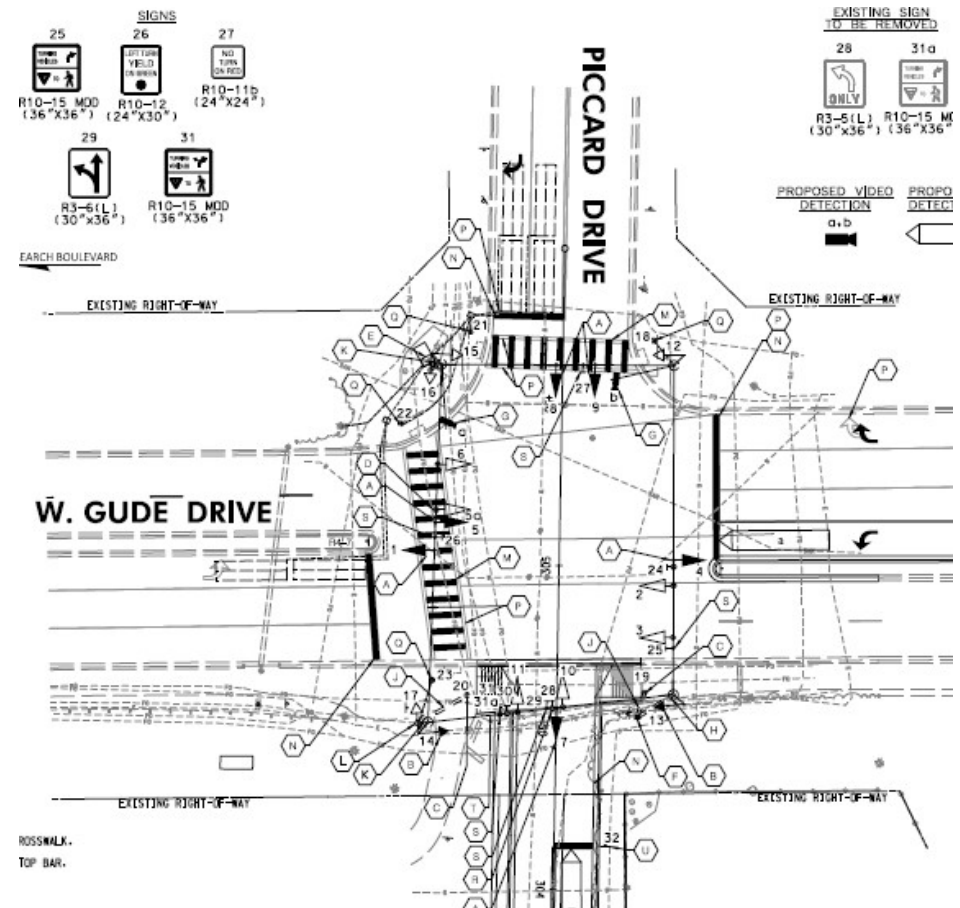
Key Project Components – Other Site Related Items





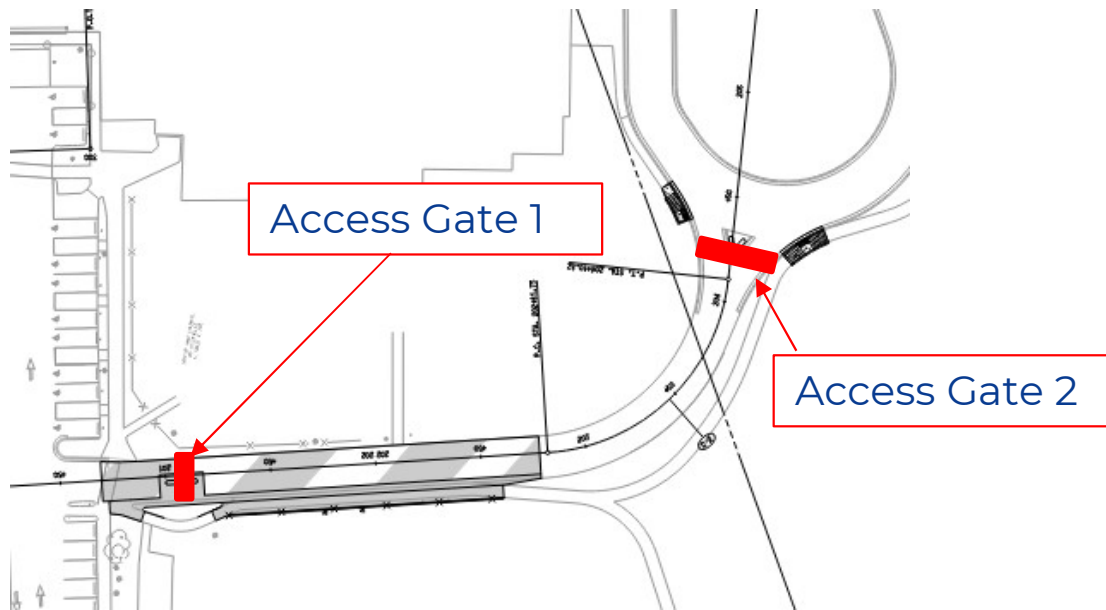
Key Project Components – Intersection Improvements

1. Dedicated left turn lane on WB W. Gude Dr. to Senior Center
2. Advanced signal ahead sign added on EB W. Gude Dr.
3. “Turning Vehicles Yield To Pedestrian/ Bicycle” sign added on EB W. Gude Dr.
4. “No turn on red” sign added on NB side of new Senior Center entrance drive
5. Implement Leading Pedestrian Interval Phase for the crossing of W. Gude Dr.
6. “Bike use Pedestrian Signal” signs added on Carl Henn Millennium Trail
7. ADA compliant curb ramps
8. Commercial concrete driveway apron to slow down traffic entering/exiting
9. Improved pedestrian connectivity with new sidewalk connections.





Key Project Components – Access Gates



- Access gates to control cut through traffic.
- 2 gates proposed, one at either end of the driveway connecting the circle to the northern parking lot.
- Access Control given to members of the senior center during the hours the senior center is open.



Next Steps and Anticipated Schedule



- Planning Commission Mandatory Referral Hearing – May 27, 2026
- Construction Bidding - June 2026
- Construction Contract Award – August 3, 2026
- Construction Begins – October / November 2026



Questions



Project Website and Contacts



<https://www.rockvillemd.gov/2540/Rockville-Senior-Center-Entrance-Project>

Jennifer Wang, PE, PTOE, PMP
Senior Transportation Engineer
e-mail: jwang@rockvillemd.gov
(240) 314-8506

Emad Elshafei, Ph.D., P.E., PTOE
Chief of Traffic and Transportation
e-mail: eelshafei@rockvillemd.gov
(240) 314-8508

Andrew Luetkemeier, P.E., PMP
Transportation Engineering Supervisor
e-mail: aluetkemeier@rockvillemd.gov
(240) 314-8524

James Woods, P.E.
Deputy Director of Public Works
e-mail: jwoods@rockvillemd.gov
(240) 314-8521